

BLOOMSBURG UNIVERSITY OF PENNSYLVANIA



2010-11 WRESTLING



Bloomsburg University Wrestling

Table of Contents

Table of Contents	1
About Bloomsburg University.....	2
Administration/Staff.....	3
Quick Facts.....	3
Media Outlets.....	4
Head Coach John Stutzman.....	6
Assistant Coach Scott Owen	7
Coaching Staff.....	8-9
2010-11 Team Photo.....	10
2010-11 Roster.....	11
2010-11 Preview	12-13
2010-11 Meet the Huskies.....	15-26
2010-11 Dual Match Results.....	29-31
2010-11 Individual Statistics.....	32
Huskies History	34-48
Pin Leaders	49
Coaching History	50
All-Americans.....	51
National Wrestling Hall of Fame.....	52
Eastern Wrestling League.....	53-55
Pennsylvania State Athletic Conference.....	56
All-Time Series Records	57
Nelson Field House Facilities	58
2010-11 Schedule.....	Back Cover

On the cover:

NCAA-Qualifier Nate Graham will lead the Huskies in 2010-11



To learn more about
Bloomsburg University visit our
website at
www.bloomu.edu
To schedule a visit to campus,
call the admissions office at
570.389.4316.



All of Bloomsburg's athletic publications are published by the Office or Marketing and Communication/University Advancement. Copyright 2010. Bloomsburg University of Pennsylvania. This publication was written by the Sports Information Director Tom McGuire with design assistance from student assistant Chris Martrich and graduate assistant Brooke Wilson. Cover design by graduate assistant Brooke Wilson. Editing by Sports Information Director Tom McGuire and Intern Paul Blascovich. Photography by Keith Haupt, and Office of Marketing and Communication. Some photos from University Archives.

Bloomsburg University Wrestling

About Bloomsburg



Bloomsburg University, a member of Pennsylvania's State System of Higher Education, is a four-year coeducational public university founded in 1839. Through the stages of its development from a normal school to a teachers college to a multipurpose state college and finally to a university in 1983, the institution has retained its emphasis on liberal arts and career education.

Bloomsburg is recognized as one of the best 100 public universities in the United States, and excellence, ranging from its 19 National Championships

A Few Facts About Bloomsburg...

Enrollment— Total enrollment is over 9,400, with an average incoming SAT of 1070 and class rank in the upper 25 percent; Bloomsburg admits one in seven applicants and has a four-year retention rate significantly higher than the national average. About 60 percent are women and 10 percent are non-traditional. About 90 percent of Bloomsburg graduates are quickly placed in their chosen fields.

Faculty— With approximately 1,000 employees, Bloomsburg University has 383 full-time faculty, 70 percent of whom hold doctoral degrees and 72 percent of whom are tenured. The staff is organized into four divisions: Academic Affairs, Administration, Student Life and University Advancement. Governance is through the State System of Higher Education's Board of Governors and through the university's Council of Trustees.

Degrees— Bloomsburg University offers 63 baccalaureate degrees, 18 master's degrees and a joint doctoral degree in elementary education in cooperation with Indiana University of Pennsylvania.

Financial Aid— About 70 percent of all students receive some form of financial aid; average amount of aid is \$10,026 per year.

Cost—About \$5,358 per year for Pennsylvania residents tuition, fees, typical room and meal plans, \$13,396 for non-residents.

School Colors, Mascot— The school colors, originally "lemon and garnet," have been maroon and gold since the 1920s. In the early 1930s, the Husky became the school mascot when a dog owned by a faculty member accompanied Adm. Richard E. Byrd on an expedition to the South Pole.

to its international reputation in a number of its academic programs, is an attitude found throughout the faculty and staff.

About 90 percent of Bloomsburg's students come from throughout Pennsylvania, creating a diverse mix of cultures and ideas. It's a place where friendships that last a lifetime begin. And it's a busy place — with more than 160 student organizations and activities, NCAA Division I wrestling and II athletic programs and a popular recreation center.

The university's Division of Continuing and Distance Education serves students through non-degree credit courses, noncredit mini-courses, off-campus classes, credit for life experience and distance learning courses on public television.

The town of Bloomsburg, located in the Susquehanna River Valley, has a population of about 12,000 people. The central business district is just three blocks southwest of campus, and includes more than 80 retail stores, restaurants, and the Bloomsburg Fair in September. More stores, restaurants and theaters can be found along nearby Route 11 and at the Columbia Mall, northwest of town.

The university is within a one-hour drive from such cities as Hazleton, Williamsport, Wilkes-Barre and Scranton; 1.5 hours from Harrisburg; 2.5 hours from Philadelphia; 3 hours from New York City and Baltimore; and four hours from Pittsburgh and Washington, DC.

Bloomsburg University Wrestling

About Bloomsburg



**President
David Soltz**



**Director of Athletics
Mary Gardner**



**Associate Director of Athletics
Kathy Heitzman**



**Athletic Operations
Kevin Wood**



**Director of Sports
Information, Athletic
Marketing Tom McGuire**



**Equipment Manager
Doug Lizardi**



**Athletic Trainer
Allen Larsen**



**Athletic Trainer
Roxanna Larsen**



**Athletic Trainer
Dave Huber**

Quick Facts

Location: Bloomsburg, PA 17815
Enrollment: 8,040
General Information: 570.389.4000
President: Dr. David Soltz
Athletic Director: Mary Gardner
Athletic Department: 570.389.4050
Colors: Maroon and Gold
Nickname: Huskies
Home Gym: Nelson Field House 1,800
Conference: Eastern Wrestling League;
Pennsylvania State Athletic Conference

Head Coach: John Stutzman
Stutzman Phone: 570.389.4282
E-mail Address: jstutzma@bloomu.edu
Assistant Coach: Scott Owen
Owen Phone: 570.389.3989
E-Mail Address: sowen@bloomu.edu
Trainers: Allen Larsen, Roxanne Larson, Dave Huber
Training Room: 570 389-4369/4668
2009-10 Dual Meet Record: 10-8, 2-4 EWL
EWL Finish: 4th
NCAA Finish: T-37th

Bloomsburg University Wrestling

Media Outlets

Press Enterprise

3185 Lackawanna Ave.
Bloomsburg, PA 17815
570-784-2121

Daily Item

200 South Market St.
Sunbury, PA 17801
570-286-5671

Milton Standard

19 Arch St.
Milton, PA 17847
570-742-9671

News-Item

701 North Rock St.
Shamokin, PA 17872
570-648-4641

Sun Gazette

252 West Fourth St.
Williamsport, PA 17701
570-326-1552

Patriot News

P.O. Box 2265
Harrisburg, PA 17105
717-255-8180

WNEP-TV 16

16 Montage Mountain Rd.
Moosic, PA 18641
570-826-1616

Hazleton Standard-Speaker

21 North Wyoming St.
Hazleton, PA 18201
570-455-3636

Citizen's Voice

75 N. Washington St.
Wilkes-Barre, PA 18711
570-821-2062

Times Leader

15 North Main St.
Wilkes-Barre, PA 18711
570-829-7229

WHLM Radio

124 East Main St.
Bloomsburg, PA 17815
570-784-1200

Associated Press

Suite 250
One Franklin Plaza
Philadelphia, PA 19102
215-561-1133

Media Information

For media credentials, photos, stories, statistics or to arrange an interview with a coach or student-athlete, contact Tom McGuire, Director of Sports Information. All members of the media are welcome to visit the Huskies' home sporting events. If members of the media are interested in covering a Bloomsburg University match, please contact the Office of Sports Information for assistance.

Office of Sports Information	570-389-4413
Sports Information Intern Paul Blascovich	570-389-2767
Graduate Assistant Phone.....	570-389-5230
Sports Information FAX	570-389-4724
Tom McGuire's Home.....	570-868-5749
Husky Hotline	570-389-BUBU
Tom McGuire E-Mail Address	tmcguire@bloomu.edu
Paul Blascovich E-Mail Address.....	pblascov@bloomu.edu
Web Site	www.buhuskies.com

Coaching Staff



BLOOMSBURG
HUSKIES
UNIVERSITY

Bloomsburg University Wrestling

Head Coach John Stutzman

John Stutzman begins his sixth season as head coach of the Bloomsburg University wrestling team in 2010-11. Under his tutelage, he has qualified 21 wrestlers for the NCAA Division I Championships and produced the school's first set of consecutive All-Americans since the 1988-89 seasons. He was named the 2007 EWL Coach of the Year, earned national recognition as a team, produced the 2007 EWL/PSAC Freshman of the Year as well as the 2009 EWL tournament's outstanding wrestler.

Prior to becoming Bloomsburg University's head wrestling coach, he was an assistant coach for seven years at the Division I level. During those seven seasons, Stutzman worked at three very successful universities: the University at Buffalo, Northern Illinois University and Bloomsburg. Throughout that time, he assisted in the development and maturation of six conference champions, 22 Division I NCAA qualifiers, and two Division I All-Americans. He has recruited six classes that have been ranked in the top 25 nationally.

In addition to his college coaching duties, Stutzman has coached with the New York Athletic Club at the 2004 and 2008 USA Olympic Freestyle Trials, as well as the 2006, 2007, and the 2009 World Team Trials. He has also coached five World Team Trials participants, two Olympic Team Trials participants, and one USA National Team Member. He was also an assistant wrestling coach for the 2009 NWCA All-American tour in Seoul, South Korea and was



the assistant wrestling coach for Team USA for the University Team Championships in Poland in 2009, while in the summer of 2010 he also coached a squad of Americans at the Ziolkowski International in Spala, Poland.

During the 2004-05 season, he helped coach six Bloomsburg NCAA qualifiers and helped lead the team to a 10-win season. The Huskies won their first Pennsylvania State Athletic Conference Championship since 1990, recording the school's 14th title in school history. Bloomsburg had two PSAC Championships in 2005, and also three EWL title-winners.

At Northern Illinois from 2000-2002, Stutzman coached All-American Scott Owen as well as helping lead the squad to a second-place finish at the Mid-American Conference Championships. From 1998-2000, Stutzman served as the assistant coach at Buffalo helping coach the school's first Mid-American Conference champion. Buffalo qualified six wrestlers to the NCAA Championships in those three seasons and compiled a 19-10-2 record.

A 1998 graduate of the University of Buffalo, Stutzman was 95-27 in a three-year career for the Bulls and left as the school's all-time leader in career wins. His best year for the Bulls was the 1996-97 season when he posted a mark of 35-4. He was a three-time East Coast Wrestling Association place winner and a two-time alternate for the Division I championships.

Stutzman, a native of New Castle, Del., is married to the former Annette Hasseman. The couple has two daughters, three-year old Alexa Bryanna, and two-year old Torin Valera.



YEAR-BY-YEAR RECORD

YEAR	W	L	T
2005-06	11	9	
2006-07	12	9	
2007-08	8	7	1
2008-09	9	7	
2009-10	10	8	
Totals	50	40	1

2010-11

Assistant Coach Scott Owen

Scott Owen begins his third season as the head assistant wrestling coach at Bloomsburg. In his two years at Bloomsburg, Owen has helped coach seven NCAA qualifiers and one All-American while also directing recruiting operations. His classes have included 8 nationally ranked wrestlers, two top-100 recruits and a combined 12 state championships.

Owen came to Bloomsburg from the United States Naval Academy where he spent three seasons as an assistant with the Midship men, helping send 16 wrestlers to the NCAA Championships while also helping produce four All-Americans and two, top-20 finishes at the NCAA Championships. He also led recruiting efforts for the Navy, bringing in two consecutive top-25 nationally ranked classes in 2007 and 2008.

Prior to his time at Navy, Owen worked at his alma mater Northern Illinois in DeKalb, Ill., where he helped lead the Huskies to national recognition on the mats. He served as a volunteer and assistant coach at the MAC school from 2004-05, where he helped coach seven NCAA Championship qualifiers and one NCAA Finalist.

As a member of the New York Athletic Club, Owen was a three-time Freestyle World Team Trials qualifier, a US Open place winner and was ranked as high as third on the Olympic ladder at 74 kilograms. He placed in numerous international tournaments including a fifth- place showing at the 2007 Ivan Yarygin International held in Krasnoyarsk, Russia, considered one of the toughest tournaments in the world. He also won the Sunkist International Open earlier that season.

As a collegiate wrestler at Northern Illinois, Owen was a four-time NCAA qualifier and two-time All-American, placing fifth at 157 pounds in 2002 and 2003. He was ranked as high as #1 in the country during the 2002-03 season and was a three-time Mid-American Conference champion. He ended his career as the all-time wins leader in Northern Illinois history and is just one of three Northern Illinois wrestlers to finish his career as a two-time All-American.

Before wrestling at Northern Illinois, Owen was a three-time New Mexico state champion and was a two-time member of the ASICS All-American Team in 1996 and 1997.

He also excelled in the classroom, where he graduated cum laude from NIU with a 3.63 GPA in biological sciences with an emphasis in pre-med and a minor in chemistry. He was a two-time member of the NWCA First-team Academic All-America Team and was named to the Verizon / CoSIDA Academic All-America Second Team in 2002. In December of 2007 he earned his master's degree in sport management from Northern Illinois.

Owen and his wife Bren reside in Bloomsburg.



Bloomsburg University Wrestling

Coaching Staff

Steve Mytych • Volunteer Assistant

Steve Mytych will be joining the Bloomsburg coaching staff in his first year as a Division I wrestling coach. After a successful college wrestling career, Coach Mytych will continue the success with the lightweights at BU.

During Mytych's time at Drexel University he set the career wins record with 137 wins and was a four time National Qualifier, finishing in the top 12 as a senior.

In 2010, Steve was the Colonial Athletic Association (CAA) Champion at 133 pounds. In his senior year, he posted a 36-7 record and was in the NCAA round of 12. Mytych won the Wilkes Open and received the OW Award after beating Shane Valko (Pitt-Johnstown), a Division II National champion whose only loss was to Mytych.

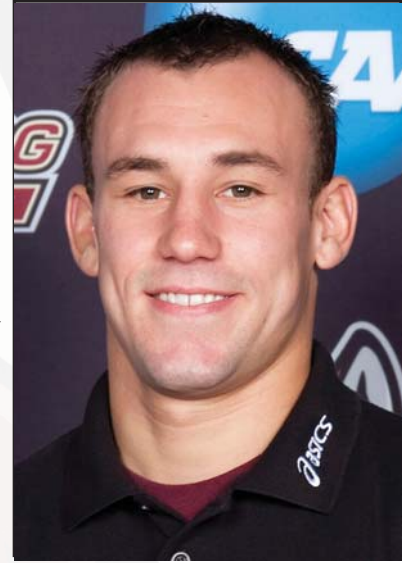
During his collegiate career, he has also held the most major decisions in a season as well as being Drexel's first wrestler in history to be awarded the CAA's Rookie of the Year.

Mytych's Olympic styles of wrestling are also superior to most. He has placed third in Greco-Roman/Freestyle at University Nationals and third in Freestyle at the Northeast Regional tournament.

In high school, Mytych competed at Northampton High School in Pennsylvania. In 2004, Northampton was ranked the #1 public high school in the country where they posted 11 qualifiers and 10 place winners at the PIAA state tournament. Mytych was a four time state qualifier and placed twice.

At Drexel University, Mytych graduated with a bachelor's degree in elementary education and plans to pursue a master's degree in special education in the future.

Mytych also plans on competing for a spot in the 2012 Olympic Games at 55kg.



Bloomsburg University Wrestling

Coaching Staff

Brian Tucker • Strength Coach

Graduate Assistant Coach Brian Tucker was a four-year varsity starter for the Dallastown Area High School Wildcats in York County Pennsylvania and wrestled for two years at The Ohio State University before transferring over to the University of Pittsburgh, where he graduated with a Bachelor's Degree in Health and Physical Activity.

Tucker completed an internship as a strength and conditioning coach for the Pittsburgh Pirates; he is a Certified Personal Trainer with the National Academy of Sports Medicine (NASM) and a Corrective Exercise Specialist.

Tucker has worked as a Strength Coach with the University of Pittsburgh Medical Center for the past three years where he has trained youth, high school, collegiate and professional athletes, including members of the National Hockey League's Pittsburgh Penguins, and several National Football League teams, such as the Pittsburgh Steelers and Baltimore Ravens.

Tucker is currently enrolled in the graduate studies program at Bloomsburg University to obtain his Master's Degree in Exercise Science.

His duties with the Bloomsburg wrestling team include specialization as a strength coach and working with the team's upper weight classes.

While in Pittsburgh, Tucker also spent time recruiting for Penn State-New Kensington and coaching with the Iron Horse Wrestling Club. There, he coached alongside Jeff Breese and Bryan Stout where he helped club wrestlers such as 2010 145 lb. PIAA AA State Champion Nick Carr and PIAA AAA fifth-place medalist Tyler Wilps along with numerous other state qualifiers and junior state qualifiers.



MarcAntoni Macias • Volunteer Assistant

MarcAntoni Macias begins his first year at Bloomsburg and will work with the middle weights for the Huskies along with performing administrative duties.

Macias wrestled collegiately for Campbellsville University in Campbellsville, Ky., from 2005 to 2008. He graduated with a bachelors of science degree in Physical Education and minor in Coaching. Macias was part of the first class to graduate from Head Coach Frank James' program which started at Campbellsville at 2004. While wrestling at CU, he qualified for the NAIA National Tournament in 2007 and 2008 at 141 and 133 lbs, respectively.

After graduation in 2008, Macias became an assistant wrestling coach for the reinstated Colorado State University-Pueblo team. While there, he was responsible for development of the light weights along with the academic support of the team.

In 2009, Macias joined the staff at the University of Maryland, where he was an administrative assistant. There, he assisted with daily operations of summer camps, assisted with recruiting by researching prospective student athletes, and prepared recruiting paperwork for distribution. His daily administrative responsibilities included video production, editing, and weekly highlight video creation along with providing support for varsity and club program fundraising.

While at Maryland, he served as an assistant wrestling coach with the Terrapins Wrestling Club, where he planned and conducted practices and clinics, provided individualized coaching, and implemented skill development programs for wrestlers of all ages and skill levels.

Macias, who hails from Alexandria, Va., has been a long time club coach at Gunston Wrestling Club from 2004-2010.

Macias resides in Bloomsburg. He will also continue his wrestling career at the senior level in freestyle.



Bloomsburg University Wrestling

2010-11 Team Photo



Front Row (L to R)--Ryan Toussaint, Craig Barker, Ian De Sol, Derek Shingara, Kyle McGregor, Elliot Zackoski, Sean Boylan, Jeremiah Biddle, Matt Malfaro

Middle Row (L to R)--Luke Etter, Mike Testen, Kevin Hartnett, Frank Hickman, Josh Roosa, Nick Wilcox, Dan Gaylord, Tim Santry, Bryan Smith, Bryce Busler, Matt Hicks

Back Row (L to R)--Assistant Coach Steve Mytych, Assistant Coach Brian Tucker, Head Coach John Stutzman, Sam Shirey, Ed Klock, Nate Ronan, Luke DeLuise, Richard Perry, Zac Walsh, Chris Smith, Nate Graham, Alex Lincoln, Mike Dessino, Josh Veltre, Assistant Coach Scott Owens, Assistant Coach MarcAntoni Macias

Bloomsburg University Wrestling

2010-11 Roster

Name	Wt.	Ht.	Yr.	Hometown/High School
Craig Barker	125	5-7	Fr.	Lecanto, FL / Citrus
Jeremiah Biddle	133	5-8	R-Jr.	Slate Hill, NY / Minisik Valley
Sean Boylan	125	5-4	Fr.	Seaville, NJ / St. Marks
Bryce Busler	157	5-6	So.	Mechanicsburg / Cumberland Valley
Jake Dabashinsky	197	6-2	Jr.	Schuylkill Haven / Blue Mountain
Ian De Sol	141	5-6	Sr.	Schenectady, NY / Guilderland
Luke DeLuise	184	5-11	Fr.	Mt. Bethel / Pius X
Mike Dessino	165	5-9	So.	Middlesex, NJ / Middlesex
Luke Etter	174	6-0	Fr.	Newville / Big Spring
Dan Gaylord	133	5-7	So.	Vestal, NY / Vestal
Nate Graham	174	5-9	Sr.	Selkirk, NY / Ravena
Kevin Hartnett Jr.	149	5-7	So.	Staten Island, NY / Monsignor Farrell
Frank Hickman	157	5-11	So.	Castle Hayne, NC / E.L. Laney
Matt Hicks	141	5-9	Fr.	Allentown (Annapolis, MD) / St. Mary's, MD
Ed Klock	197	6-1	R-So.	Shamokin / Line Mountain
Alex Lincoln	149	5-9	Fr.	Easton / Notre Dame
Matthew Malfaro	133	5-6	Fr.	Gilbertsville / Boyertown
Richard Perry	197	5-11	Rf.	Meriden, CT / Middletown
Nate Ronan	184	6-0	Fr.	Christiana / Octorara
Josh Roosa	149	5-7	R-So.	Mountaintop / Crestwood
Tim Santry	133	5-7	Fr.	Hatboro / Upper Moreland
Derek Shingara	141	5-8	Fr.	Shamokin / Shamokin
Sam Shirey	165	5-11	Rf.	Beaver Springs / Midd-West
Bryan Smith	149	5-8	Rf.	Coopersburg / Bethlehem Catholic
Chris Smith	165	6-1	Rf.	Mineral, Va. / Chancellor
Mike Testen	157	5-9	Fr.	Sayre / Athens
Ryan Toussaint	133	5-7	Rf.	Arundel, ME / Deering
Josh Veltre	165	5-7	So.	Rochester, NY / Greece Olympia
Zac Walsh	285	6-3	R-Jr.	Denville, NJ / Morris Knolls
Nick Wilcox	133	5-11	Fr.	Greene, NY / Greene Central
Elliot Zackoski	125	5-8	Fr.	Scranton / West Scranton

Bloomsburg University Wrestling

2010-11 Preview

When a coach reviews his roster before the start of a season and sees more FR's (freshman) than SR's (seniors) behind the names of his athletes, it typically is not a good sign. However, Bloomsburg University wrestling coach John Stutzman doesn't see it that way. For Stutzman, those FR's means a bright future with lots of potential.

The Huskies, who lost five key starters from last year, including former two-time All-American Matt Moley, are probably the youngest they have been in quite some time. But according to Stutzman, that could be a good thing.

"We will be a youthful team, no doubt about that," said the veteran coach. "But that youth has a lot of potential. Our guys have been working extremely hard in practice from day one, and we don't even know what the expectations for the group are. By working hard, our guys are putting themselves in a position to be successful wrestlers."

Leading the Huskies in 2010-11 will be 174-pounder, senior Nate Graham. An NCAA qualifier last year after being an EWL runner-up, Graham will lead the Huskies youthful group by his quiet example.

The strength of the Huskies will be in the lower weights where the team will have some talented guys battling for mat time.

"We need our returning wrestlers to be vocal leaders and help our young guys," said Stutzman. "If they can learn early on what it takes to be a successful wrestler at this level, we will see positive results."

WEIGHT BY WEIGHT

125—There are three solid guys at this weight led by Sean Boylan who has shown great technique. Also look for Matt Malfaro and Craig Barker to be in the mix at this weight.



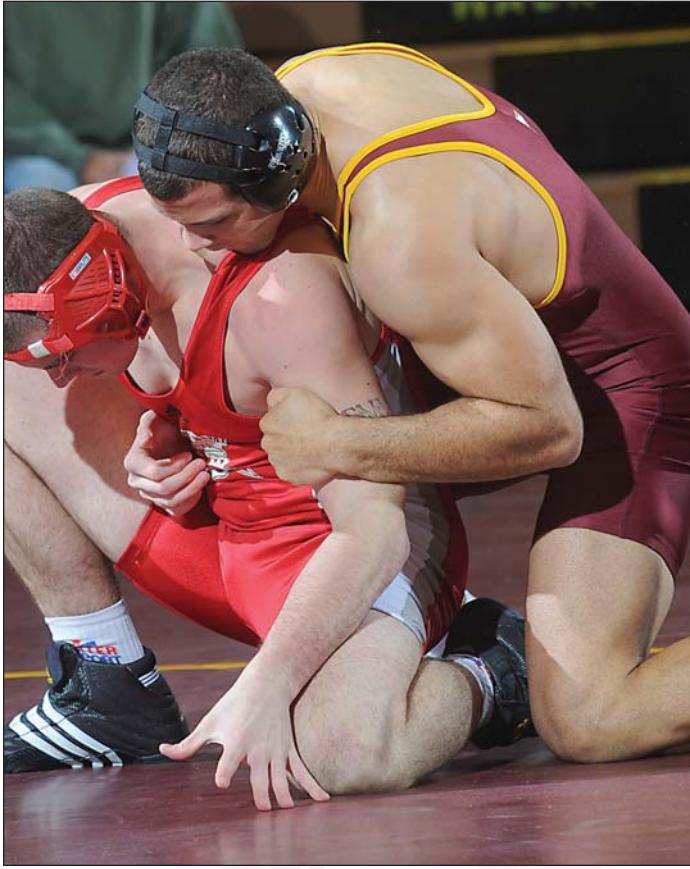
133—The Huskies expect to score points this weight class. Nick Wilcox leads another solid group that also includes Jeremiah Biddle, a three-year letterwinner, and Ryan Toussaint, a red-shirt freshman. Elliot Zackoski will also be in the mix.

141—Lots of options for the coaching staff at this weight give the staff reason for optimism. Derek Shingara, another true freshman, and Dan Gaylord, a spot starter last season, headline this weight. In addition, Matt Hicks and Tim Santry both add depth to the class.

149—Returning starter Josh Roosa leads the group at this weight class. Roosa should be someone challenging for an EWL title and a trip to NCAA's. Mike Testen, Ian De Sol, Brian Smith and Alex Lincoln make this another deep weight class for the Huskies.

Bloomsburg University Wrestling

2010-11 Preview



Nate Graham posted 27 wins a year ago

157—The Huskies lost one of their all-time greats at this weight with the graduation of Matt Moley. Trying to fill the shoes of the former two-time All-American will be Frank Hickman, bumping up from 149 pounds, and Bryce Busler, who posted 19 wins a year ago. Also look for Kevin Hartnett, who has been added to the mix, as a transfer from the Merchant Marine Academy.

165—Bloomsburg lost another all-time great in Ricky Schmelyun at this weight class. Leading the group there this season is Mike Dessino, a 20-match winner last season. Also competing hard for mat time will be Josh Veltre, who won his weight class at the Clarion Open last season, and Sam Shirey.

174—At this weight class will be senior Nate Graham. A quiet leader, Graham, who will start the season at 184 and move down later in the year, was an EWL-runner-up and NCAA-qualifier a year ago. He hopes to make it to the national podium and earn All-American honors this season. Behind Graham will be Chris Smith, moving up three weight classes from a year ago, and Luke Etter, a true-freshman.

184—This is another wide open weight class for the Huskies. Look for Nate Ronan and Luke DeLuise to battle it out for the starting spot here. Both wrestlers are former PIAA

state qualifiers.

197—While the Huskies are not deep at this weight, Richard Perry has the potential to be very good for the team. Perry won a lot of matches during his red-shirt year, and the coaching staff expects him to win a high level this season. Behind Perry is Lycoming College transfer Ed Klock, who played football at the Division III level.

285—The biggest weight class turns out to be the thinnest for the coaching staff with just Zac Walsh available at this weight. Walsh, fourth at EWL's last year, has progressed each of his two previous seasons, and the coaching staff expects more of the same this year.

OVERALL

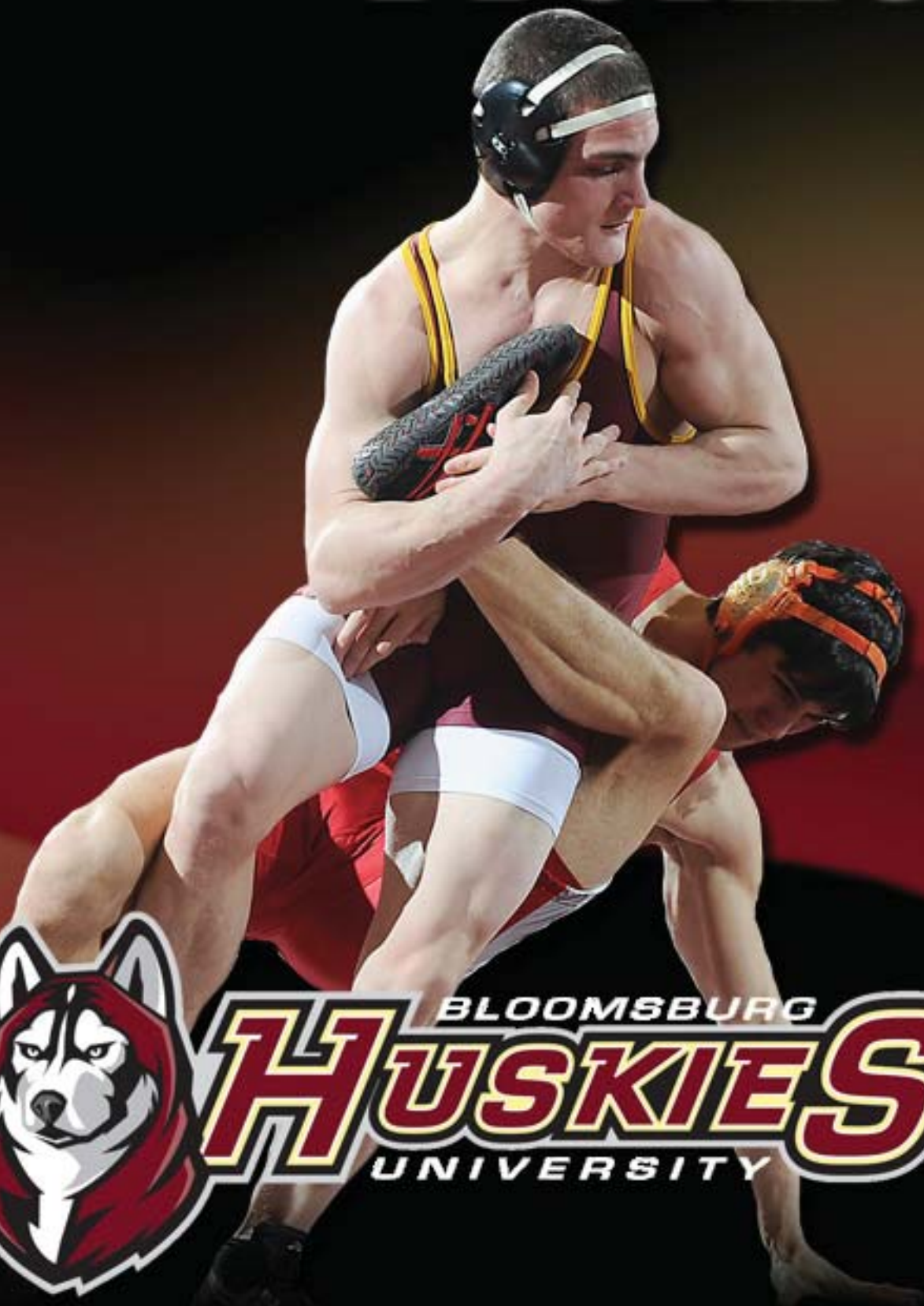
“This group of wrestlers trains as hard as any group I have had here at Bloomsburg,” said Stutzman. “They are giving themselves a chance to be successful by their hard work. We are benefitting as a team from our new wrestling room. We are now settled into our new home, and the team is taking advantage of its new space.”

“There is no pressure on this group,” Stutzman continued. “We are giving them a tough schedule, but as a wrestler you can only get better by wrestling the best. This will help when we get to the EWL championships for sure.”

Player Profiles



BLOOMSBURG
HUSKIES
UNIVERSITY



Bloomsburg University Wrestling

Meet the Huskies



Ian Del Sol
141 Pounds
6-0, R-Senior
Schenectady, NY/Guilderland

CAREER NOTES

2009-10: Picked up his first win of the season at the prestigious Mat Town Invitational at Lock Haven winning 5-3, in sudden victory...Won by fall in 4:10 at the Hitchcock Invitational at Millersville...Was sixth at EWL's. **2008-09:** Saw limited action for the Huskies...Took part in the Michigan State Open and Nittany Lion Open...**2007-08:** Saw action at both 133 and 141 pounds for the Huskies. **High School:** Won 102 matches...Finished second at sectionals...Was a two-time New York State Tournament qualifier.

CAREER STATISTICS

Year	Record	Pins
2007-08	0-9	0
2008-09	0-3	0
2009-10	2-15	1

Career	2-27	1



Nate Graham
174 Pounds
5-10, Senior
Selkirk, NY/Ravena

CAREER NOTES

2009-10: Finished with a record of 27-11 on the season...Earned his first trip to the NCAA championships as a wild-card selection...Was second at 174 pounds at the EWL championships...27 wins were a career high...Won six of his final seven matches heading into the NCAA championships...Repeated at PSAC champion at 174 pounds...Was second at the Buffalo Open...Recorded wins by fall during the season in 45 seconds, 1:07, 1:12 and 1:24...**2008-09:** Finished fourth at the EWL championships...Was named the EWL Wrestler of the Week on Feb. 1 after he posted two wins against Clarion and Cleveland State. In the match with Clarion he won by a 6-0 decision, then, posted a first period fall against Cleveland State...Was fourth the Body Bar Invitational and fifth at the Michigan State Open...Earned a third-place finish at the PSAC Championships...**2007-08:** Became a starter at 133 pound and posted a record of 21-1...Came on strong in the second half of the season winning 13 of his final 20 matches...Took fifth at EWL championships and second at PSAC championships...In a tri-match with East Stroudsburg and Delaware State he won both his matches by fall...Overall had five wins by fall and six by major decision...**2006-07:** Posted a mark of 4-2 in dual meet competition...Saw time at both 125 and 133 pounds.

CAREER STATISTICS

Year	Record	Pins
2007-08	16-7	3
2008-09	20-15	1
2009-10	27-11	6

Career	63-33	10

Bloomsburg University Wrestling

Meet the Huskies



Jeremiah Biddle
133 Pounds
5-10, R-Junior
Slate Hill, NY/Minisik Valley

CAREER NOTES

2009-10: Placed 3rd at Brockport Northeast Regional Championships...**2008-09:** Competed in six matches for the Huskies...Saw action at the Michigan State Open, the Body Bar Invitational and the Southern Scuffle...**High School:** Was a two-time New York State Qualifier...Was a placewinner as a senior.

CAREER STATISTICS

Year	Record	Pins
2008-09	0-6	0
2009-10	4-10	2

Career	4-16	2



Zac Walsh
133 Pounds
5-10, R-Junior
Slate Hill, NY/Minisik Valley

CAREER NOTES

2009-10: Posted a career-high 16 wins for the Huskies...Was fifth at the EWL championships and fourth at the PSAC championships...Won both his matches at the Millersville Duals by fall. Beat Nathanael Lavelle of Boston University in 6:34 and Charles Godfrey of Millersville in 2:47...Posted a win by fall in just 1:43 against his opponent from Cleveland State in a dual meet at Bloomsburg...Ended the season with a win by major decision at the EWL championships... **2008-09:** Placed fifth at the EWL championships...Won two matches at the PSAC championships by decision... **2007-08:** Red-Shirt year...**High School:** Was fifth at New Jersey State championships...Also played football in high school.

CAREER STATISTICS

Year	Record	Pins
2008-09	8-23	0
2009-10	18-22	4

Career	26-45	4

Bloomsburg University Wrestling

Meet the Huskies



Jake Dabashinsky
197 Pounds
6-2, Junior
Schuylkill Haven /Blue Mountain

CAREER NOTES

2009-10: Had a mark of 13-7 during the season, including wins in his last five matches... Three of those five wins were by first period fall...Began his career with a win by fall in 6:58 at the Buffalo Open...Scored a 12-9 win over his opponent from Central Michigan at the Northeast Duals...Finished third at the PSAC Championships at 197 pounds...Was fourth at the Navy Classic winning two matches, including a win by fall in 6:28 over his opponent from Virginia Tech...**2008-09:** Red-shirt year...Took part in Buffalo Open, Michigan State Open, Binghamton Open, Body Bar Invitational, Mat Town Open, Nit-tany Lion Open and the Southern Scuffle...Posted a record of 8-12 during the year in open competitions...**High School:** Finished at District 11 "AAA" championships in '08...Was 36-15 as a senior.

CAREER STATISTICS

Year	Record	Pins
2008-09	8-12	4
2009-10	13-9	7

Career	21-21	11



Dan Gaylord
133 Pounds
5-7, Sophomore
Vestal, NY/Vestal

CAREER NOTES

2009-10: Scored a win by fall in the Huskies dual match with Penn State. Pinned PSU's Bryan Pearsall in 5:28...Went 2-2 at the Navy Classic...Posted a 10-9 win over Josh Grieg of UNC-Greensboro at the Southern Scuffle...Had a win by fall at the Buffalo Duals...**High School:** Posted a record of 107-29 in high school...Finished first and second at the Empire State Games...Was a Fargo qualifier.

CAREER STATISTICS

Year	Record	Pins
2009-10	6-13	2

Career	6-13	2

Bloomsburg University Wrestling

Meet the Huskies



Frank Hickman

141 Pounds

5-10, Sophomore

Paxtonville/ E.A. Laney

CAREER NOTES

2009-10: Saw action at 141 and 149 pounds for the Huskies...Posted a mark of 17-4 on the season...Won the 141 pound title at the PSAC championships downing Joel Webster of Edinboro in the finals by a score of 10-2...Scored a 19-12 win over Colby Pisani of Penn State in the Huskies dual match with the Nittany Lions...Began the season with nine straight wins and 15 of his first 16 decisions...Took sixth at the Southern Scuffle. After dropping his first match there, he won seven straight matches before dropping his final two bouts of the tournament...Beat Zach Kell of Lock Haven 6-3 in his final match of the season...**2008-09:** Red-shirt year. **High School:** Posted a record of 57-5 as a senior...Finished third at 145 pounds in 2008...Fifth in 2007 and third in 2005...Won two regional titles...Had an overall record of 201-23.

CAREER STATISTICS

Year	Record	Pins
2009-10	17-4	1

Career	17-4	1



Mike Dessino

165 Pounds

5-8, Sophomore

Middlesex, NJ/Middlesex

CAREER NOTES

2009-10: Saw action at both 165 and 174 pounds for the Huskies...Named the EWL Wrestler of the Week on Nov. 11 after picking up two wins at the Millersville Duals...Posted a record of 20-12 on the season, including seven wins by fall...Won two matches by fall at the Buffalo Open...Went 4-2 at the Southern Scuffle in late December...Picked up a win by fall and technical fall at the Hitchcock Invitational at Millersville... **High School:** Was a three-time district champion...Won a regional championship and advanced to NJ states three-times...Two-time state placewinner...Career record of 145-22 with 98 falls....Was a three-time letterwinner in football.

CAREER STATISTICS

Year	Record	Pins
2009-10	20-12	7

Career	20-12	7

Bloomsburg University Wrestling

Meet the Huskies



Josh Veltre

165 Pounds

5-7, Sophomore

Rochester, NY/Greece Olympia

CAREER NOTES

2009-10: Saw time at both 157 and 165 pounds for the Huskies. Went 1-1 in dual meet action for the Huskies...Scored a win by decision at the Buffalo Duals...Won three of four matches at the Hitchcock Invitational at Millersville...Picked up a win by major decision at the Clarion Open...Earned his first collegiate fall in 2:39 over his opponent from Pitt at the Buffalo Open... **High School:** Two-time New York State Qualifier...Two-time New York state place winner...New York State Runner-Up in Big School competition...Lost in the finals of the 2009 USA Wrestling Beach National Championships.

CAREER STATISTICS

Year	Record	Pins
2009-10	7-13	0

Career	7-13	0



Bryce Busler

157 Pounds

5-6, Sophomore

Mechanicsburg/Cumberland Valley

CAREER NOTES

2009-10: Posted a record of 19-10 on the season...Picked up his first career dual meet victory by fall at the Buffalo Duals...Started his collegiate career with a 17-1 win over a Slippery Rock wrestler at the Clarion Open...Went 6-2 at the Hitchcock Invitational at Millersville...Scored a 22-7 win by technical fall at the Southern Scuffle. Finished fourth at FILA Junior Championships...**High School:** Was a three-time PIAA "AAA" state qualifier...Three-time PIAA "AAA" placewinner...PIAA "AAA" state runner-up...

CAREER STATISTICS

Year	Record	Pins
2009-10	19-10	2

Career	19-10	2

Posted a career record of 93-35...Finished sixth at PIAA state championships as a sophomore...Was second as a junior.

Bloomsburg University Wrestling

Meet the Huskies



Josh Roosa
149 Pounds
5-7, R-Sophomore
Mountaintop/Crestwood

CAREER NOTES

2009-10: Posted 20 wins on the season...Finished fifth at the EWL championships and was second at the PSAC championships...Picked up a win by fall at the Navy Classic in just 1:29 to help him to a third place finish...Won his last two matches of the season by major decision...Beat 19th-ranked Desi Green of Buffalo 3-2 at the Buffalo Duals...

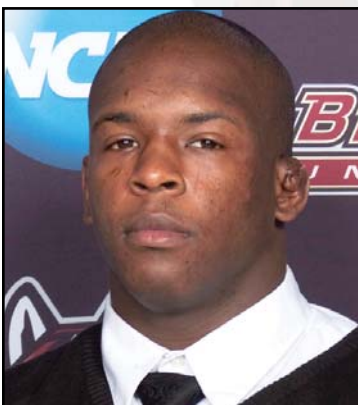
2008-09: Red-shirt year...Took first at the Michigan State Open. Special note: Placed fifth at the University National Freestyle Championships in the summer of 2009 which qualified him for the Junior World Team Trials...

High School: Posted a record of 143-18...Won four PIAA District 2 championships...Had a record of 34-0 as a senior before breaking his hand and having to miss the state championships...Was sixth at PIAA "AAA" championships in 2007...Was the 2006 and 2007 National High School Coaches Association national champion at 145 pounds.

CAREER STATISTICS

Year	Record	Pins
2009-10	20-12	1

Career	20-12	1



Richard Perry
197 Pounds
5-11, R-Freshman
Meriden, CT/Middletown

CAREER NOTES

High School: Two-time State Champion...Two-time New England runner-up...Placed 3rd at the Prep School championships to earn All-American honors.

Bloomsburg University Wrestling

Meet the Huskies



Kevin Hartnett Jr.
149 Pounds
5-7, Sophomore
Staten Island, NY/Monsignor Farrell

CAREER NOTES

High School: Two-time New York State qualifier...Won the 2008 CHSAA 119 pound weight class state championship.



Ed Klock
197 Pounds
6-1, R-Sophomore
Shamokin/Line Mountain

CAREER NOTES

High School: 140 career wins...PIAA state qualifier...8th-place finisher at PIAA Championships...District Champion.



Ryan Toussaint
133 Pounds
5-7, R-Freshman
Arundel, ME/Deerfield

CAREER NOTES

High School: Was a Maine State Champion...Three-time Maine state finalist...New England runner-up.

Bloomsburg University Wrestling

Meet the Huskies



Sam Shirey
165 Pounds
5-11, R-Freshman
Beaver Springs/Midd-West

CAREER NOTES

High School: Two-time PIAA state placewinner (6th and 7th).



Chris Smith
149 Pounds
6-0, Red-Shirt Freshman
Mineral, VA/Chancellor High

CAREER NOTES

High School: Four-time Virginia (VIAA) State Qualifier...Four-time VIAA State place winner...VIAA state runner-up.



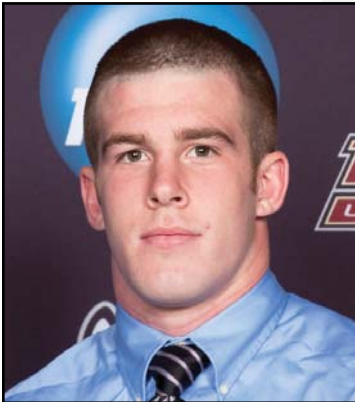
Bryan Smith
149 Pounds
5-8, R-Freshman
Coopersburg/Bethlehem Catholic

CAREER NOTES

High School: Placed 7th at the 2009 PIAA state championships...Placed 1st at the Escape the Rock Tournament...Had a 135-32 career record.

Bloomsburg University Wrestling

Meet the Huskies



Mike Testen

157 Pounds

5-9, Freshman

Sayre/Athens

CAREER NOTES

High School: Placed third at the 2010 PIAA "AA" state championships.



Nate Ronan

184 Pounds

6-0, Freshman

Christiana/Octorara

CAREER NOTES

High School: PIAA State qualifier...Two-time district champion...Three-time regional qualifier.



Tim Santry

133 Pounds

5-7, Freshman

Hatboro/Upper Moreland

CAREER NOTES

High School: Three-time state qualifier...Placed eighth at states.

Bloomsburg University Wrestling

Meet the Huskies



Craig Barker

125 Pounds

5-7, Freshman

Lecanto, FL/Citrus

CAREER NOTES

High School: Florida State Champion...Two-time medalist...Three-time state qualifier.



Derek Shingara

141 Pounds

5-8, Freshman

Shamokin/Shamokin

CAREER NOTES

High School: Three-time state qualifier...Cadet Freestyle State Champ...Qualified at Freestyle Fargo Nationals...Was a district, regional, and all-area and league champion...Placed second at the Penn State Holiday Tournament...Was the champion of the Mawa regional and was a Florida Diesle Champion team member.



Sean Boylan

125 Pounds

5-4, Freshman

Seaville, NJ/St. Marks

CAREER NOTES

High School: Three-time Delaware State Champion...Was Beast of the East champion once...Placed four times at Beast of the East...Fila Cadet Champion...Super 32 Champion...Placed third at Fargo...Bethlehem Holiday Classic Champion.

Bloomsburg University Wrestling

Meet the Huskies



Luke DeLuise

184 Pounds

5-11, Freshman

Mt. Bethel/Pius X

CAREER NOTES

High School: Placed third at districts and won the District II Pinner Award...District Champion and Pinner Award winner...Regional runner up...Placed seventh at states...Finished his high school career with 101 wins and was first team all area.



Luke Etter

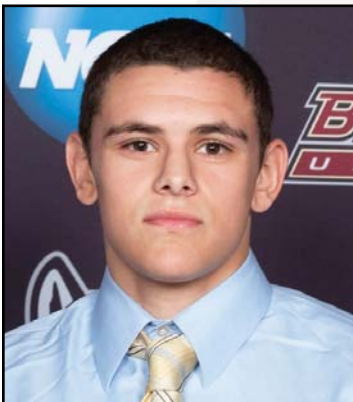
174 Pounds

6-0, Freshman

Newville/Big Spring

CAREER NOTES

High School: Two-time Pennsylvania "AAA" State Qualifier...Placed eighth at "AAA" States...Four-time District III qualifier...Three-time Escape the Rock medalist...Two-time Sentinel Newspaper first team...Placed third at Freestyle States...Greco State qualifier...Finished with 124 career high school wins.



Matt Hicks

141 Pounds

5-9, Freshman

Allentown (Annapolis, MD) /St. Mary's

CAREER NOTES

High School: Two-time Maryland State placewinner (4th and 3rd).

Bloomsburg University Wrestling



Nick Wilcox
133 Pounds
5-11, Freshman
Greene, NY/Greene Central

CAREER NOTES

High School: Three time New York State Champion and one time NYS Runner Up...Placed 8th at Cadet Greco Nationals and placed 5th at Junior Greco Nationals...Finished his high school career with 220 wins.



Elliot Zackoski
125 Pounds
5-8, Freshman
Scranton/West Scranton

CAREER NOTES

High School: Posted 110 career wins...Placed four times in districts...Was a three-time regional qualifier.



Alex Lincoln
149 Pounds
5-9, Freshman
Easton/Notre Dame

CAREER NOTES

High School: Four year starter and had three years of over a .500 record.

Bloomsburg University Wrestling

Meet the Huskies



Matthew Malfaro

133 Pounds

5-6, Freshman

Gilbertsville/Boyertown

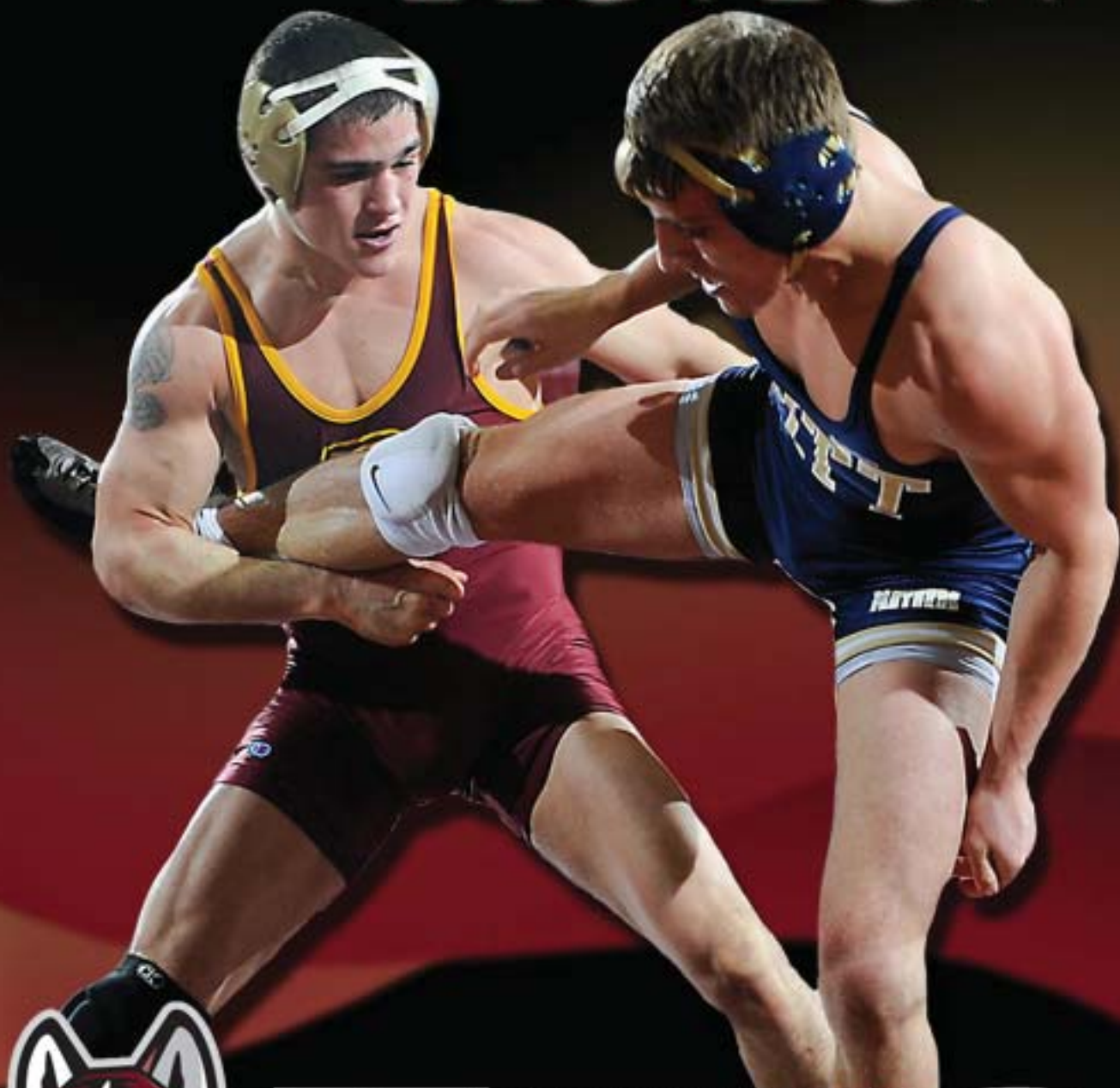
CAREER NOTES

High School: Three-time Pennsylvania state qualifier...7th place PA medalist for “AAA”...Two-time Beast of the East Placer...Southeast PA regional champion.



Former Bloomsburg University All-American wrestler Matt Moley

2009-10. Review



BLOOMSBURG
HUSKIES
UNIVERSITY

Bloomsburg University Wrestling

2009-10 Dual Match Results

Bloomsburg 26 Boston University November 7, 2009

125	BL	Guffey dec. Santaite	6-4
133	BU	Buff dec. Gaylord	8-3
141	BL	Hickman dec. Rush	12-4
149	BL	Roosa dec. Swank	10-3
157	BL	Moley dec. Mandelbraut	13-1
165	BL	Dessino dec. Inglin	7-4
174	BL	Graham dec. Czarnecki	7-1
184	BU	Hall pin. Coffey	21
197	BU	Kennedy dec. Dabashinsky	3-2
285	BL	Walsh pin. Lavalley	6:34
285	BL	Sheaffer dec. Walsh	8-3

Bloomsburg 40 Millersville -1 November 7, 2009

125	BU	Millersville For.	
133	BU	Gaylord dec. Reed	11-7
141	BU	Hickman dec. Greck	5-3
149	BU	Roosa dec. Lester	13-4
157	BU	Moley dec. Hostetter	5-1
165	BU	Dessino dec. Brookes	5-2
174	BU	Graham dec. Smith	4-1
184	BU	Shaw dec. Foor	14-4
197	BU	Dabashinsky WBF Bennett	6:40
285	BU	Walsh WBF Godfrey	2:47

Penn State 23 Bloomsburg 15 November 15, 2009

125	PSU	Pataky WTF Guffey	22-7
133	BU	Gaylord WBF Pearsall	5:28
141	BU	Hickman dec. Pisani	19-12
149	PSU	Molinario maj. dec. Roosa	12-3
157	PSU	Sanderson dec. Moley	3-1
165	PSU	Vallimont dec. Schmelyun	2-1
174	BU	Graham dec. Fisher	11-5
184	BU	Coffey dec. Ortega	4-0
197	PSU	Stedman dec. Dabashinsky	3-1
285	PSU	Wade WBF Walsh	4:42

Bloomsburg 18 Michigan 17 November 28, 2009

125	BU	Guffey dec. Boyle	6-2
133	MU	Stevens dec. Gaylord	10-1
141	BU	Hickman dec. Weber	4-3
149	BU	Roosa dec. Beaudry	8-4
157	BU	Moley WBF Johnson	3:44
165	BU	Schemelyun dec. Hynes	7-2
174	MU	Zerrip dec. Graham	5-2
184	MU	Collins dec. Coffey	6-1
197	MU	Biondo dec. Dabishinsky	11-1
285	MU	Phillips dec. Walsh	1-0

Bloomsburg 20 Columbia 13 November 28, 2009

125	CU	Gilchrist dec. Guffey	6-1
133	CU	Grabfelder dec. Gaylord	17-4
141	BU	Hickman dec. O'Hara	6-5
149	BU	Roosa dec. Santos	6-5
157	BU	Moley dec. Dunn	11-1
165	CU	Civan dec. Dessiono	6-3
174	BU	Graham dec. West	3-2
184	BU	Coffey dec. Aldrich	9-0
197	BU	Shaw dec. Manna	2-0
285	CU	Lester dec. Walsh	5-2

Central Michigan 23 Bloomsburg 15 November 28, 2009

125	CM	Beebe dec. Bak	17-0
133	CM	Sentes WBF Biddle	6:35
141	BU	Hickman dec. Shutich	13-2
149	CM	D'Alie dec. Roosa	5-3
157	BU	Moley dec. Corby	15-0
165	BU	Schemelyun dec. Cubberly	5-3
174	CM	Bennet dec. Graham	2-0
184	CM	Miller dec. Coffey	4-3
197	BU	Dabishinsky dec. Davis	12-9
285	CM	Trice dec. Walsh	11-5

WBF = Won By Fall

WTF= Won By Technical Fall

Bloomsburg University Wrestling

2009-10 Dual Match Results

Bloomsburg 33 Findlay 6 December 20, 2009

125	BU	Guffey maj. dec. Wiesjahn	10-0
133	BU	Biddle WTF Ulsinski	34-19
141	UF	Falk dec. Gaylord	6-1
149	BU	Roosa maj. dec. Espinoza	11-2
157	BU	Moley WTF Lybarger	17-2
165	BU	Schmelyun WBF Bowser	2:41
174	UF	Shannon dec. Dessino	4-2
184	BU	Coffey dec. Havelka	7-2
197	BU	Shaw dec. Stevenson	7-6
HWT	BU	Walsh dec. Ruffer	4-1

Bloomsburg 41 Sacred Heart 6 January 5, 2010

125	BU	FOR	
133	BU	Guffey WTF Impellizeri	21-6
141	BU	McAuley WBF Ricco	1:06
149	BU	FOR	
157	SH	Priore dec. Busler	3-1
165	SH	Rizzitello dec. Veltre	5-3
174	BU	Dessino WBF Hartman	4:40
184	BU	Graham WBF Sheppard	0:45
197	BU	Shaw dec. Eichenlaub	5-3
285	BU	Walsh dec. Schweighardt	2-0

Bloomsburg 43 NCCC 5 December 20, 2009

125	BU	Bak dec. Rosso	3-2
133	BU	Biddle dec. Audy	8-6
141	BU	Gaylord WBF Coughlin	4:34
149	BU	Roosa dec. Shive	6-2
157	BU	Veltre maj. dec. Manley	14-3
165	BU	Busler WBF Ciarmella	4:50
174	BU	Lester inj.	
184	BU	Coffey WBF Dawson	5:22
197	BU	Dabashinsky WBF Galusha	1:37
HWT	NCCC	Johnson WBF Walsh	1:32

#2 Iowa State 38 Bloomsburg 7 January 9, 2010

125	ISU	Long WBF Bak	5:41
133	ISU	Fanthorpe maj. dec. Guffey	16-4
141	ISU	Jensen WBF McAuley	3:53
149	ISU	Mueller dec. Roosa	7-5 SV
157	BU	Moley maj. dec. Carr	17-6
165	ISU	Reader WBF Schmelyun	0:48
174	BU	Graham dec. Spangler	3-2
184	ISU	Ward maj. dec. Coffey	13-3
197	ISU	Varner WBF Shaw	1:30
285	ISU	Simonson dec. Walsh	6-2

Bloomsburg 21 Buffalo 16 December 20, 2009

125	BU	Guffey dec. Bishop	8-2
133	UB	Smith maj. dec. Biddle	12-1
141	UB	Schutt WBF Gaylord	0:49
149	BU	Roosa dec. Green	3-2
157	BU	Moley dec. Stella	7-2
165	BU	Schmelyun WBF Cannon	2:01
174	BU	Graham dec. Sheehan	4-1
184	UB	Peters dec. Coffey	5-3
197	UB	Hamel dec. Shaw	3-2
285	BU	Walsh dec. Mason	8-4

Northern Iowa 22 Bloomsburg 16 January 9, 2010

125	UNI	Young dec. Bak	10-4
133	BU	Guffey WBF Lazor	4:01
141	UNI	Hoffman dec. McAuley	5-3
149	UNI	Robbins maj. dec. Roosa	17-6
157	BU	Moley maj. dec. Reiner	16-4
165	BU	Schmelyun WBF Bonin	0:39
174	UNI	Beets dec. Graham	7-6
184	UNI	O'Loughlin dec. Coffey	4-1
197	UNI	Bauman dec. Shaw	2-0
285	UNI	Brantley dec. Walsh	8-4

WBF = Won By Fall

WTF= Won By Technical Fall

FOR= Forfeit

Bloomsburg University Wrestling

2009-10 Dual Match Results

Pittsburgh 23 Huskies 12 January 17, 2010

125	UP	Zanetta dec. Bak	12-6
133	UP	Conroy dec. Guffey	6-4
141	UP	Nauman maj. dec. Hickman	8-0
149	BU	Roosa dec. Albright	6-1
157	BU	Moley maj. dec. Tasser	17-6
165	BU	Schmelyun WBF Counterman	1:35
174	UP	Sullivan dec. Graham	2-0
184	UP	Thomusseit dec. Coffey	7-1
197	UP	Wilps dec. Shaw	3-2
285	UP	Tomei maj. dec. Walsh	14-5

Bloomsburg 38 Cleveland State 7 January 31, 2010

125	BU	Bak dec. Butler	9-6
133	BU	Guffey WTF Huff	23-6
141	CSU	Mencini maj. dec. De Sol	14-3
149	BU	Roosa maj. dec. Castillo	13-3
157	BU	Moley maj. dec. Carlo	12-2
165	BU	Schmelyun WTF Michaels	16-0
174	CSU	Effner dec. Dessino	4-2
184	BU	Coffey WTF Anthony	17-0
197	BU	Shaw WBF Schuller	1:09
285	BU	Walsh WBF Weber	1:52

West Virginia 24 Bloomsburg 18 January 24, 2010

125	WVU	Young WBF Bak	1:47
133	WVU	Johnston dec. Gaylord	8-3
141	WVU	Curcio dec. Guffey	7-5
149	BU	Roosa dec. Rowe	7-6 TB
157	BU	Moley WBF Eason	6:32
165	BU	Schmelyun dec. Jones	11-7
174	BU	Graham dec. Weston	4-3
184	BU	Coffey dec. DeSano	9-3
197	WVU	Rooney dec. Shaw	3-1
285	WVU	Williamson WBF Walsh	1:43

Edinboro 28 Bloomsburg 13 February 5, 2010

125	EU	Morrill maj. dec. Bak	14-1
133	EU	Fluke maj. dec. Guffey	13-2
141	EU	Webster WTF De Sol	15-0
149	EU	Gillespie WBF Roosa	5:10
157	BU	Moley WTF Greisheimer	16-1
165	BU	Schmelyun WTF Hrunka	16-0
174	BU	Graham dec. Paddock	5-3
184	EU	Bradshaw dec. Coffey	4-1
197	EU	Fendone dec. Shaw	8-2
285	EU	Birchler dec. Walsh	11-4

Clarion 22 Bloomsburg 17 January 29, 2010

125	CU	Waltko WBF Bak	3:27
133	BU	Guffey dec. Ivanco	5-2
141	CU	Lewis maj. dec. Desole	12-2
149	CU	Fleming dec. Roosa	3-2
157	BU	Moley dec. Harrison	7-1
165	BU	Schmelyun WTF Milano	18-0
174	BU	Graham WBF Cressley	4:45
184	CU	Podish dec. Coffey	6-1
197	CU	Thomas dec. Shaw	6-1
285	CU	McCorkle dec. Walsh	2-1

Bloomsburg 22 Lock Haven 15 February 12, 2010

125	LHU	Hyatt maj. dec. Bak	16-2
133	BU	Guffey dec. Trumbetti	8-7
141	LHU	Wilkinson WTF De Sol	17-1
149	BU	Hickman dec. Kell	6-3
157	BU	Moley maj. dec. Creasy	22-8
165	BU	Schmelyun WBF Dufresne	1:18
174	BU	Graham dec. Caldwell	5-3
184	LHU	Cook dec. Coffey	5-2
197	BU	Shaw dec. Turner	5-2
285	LHU	Craig dec. Walsh	3-2

WBF = Won By Fall

WTF= Won By Technical Fall

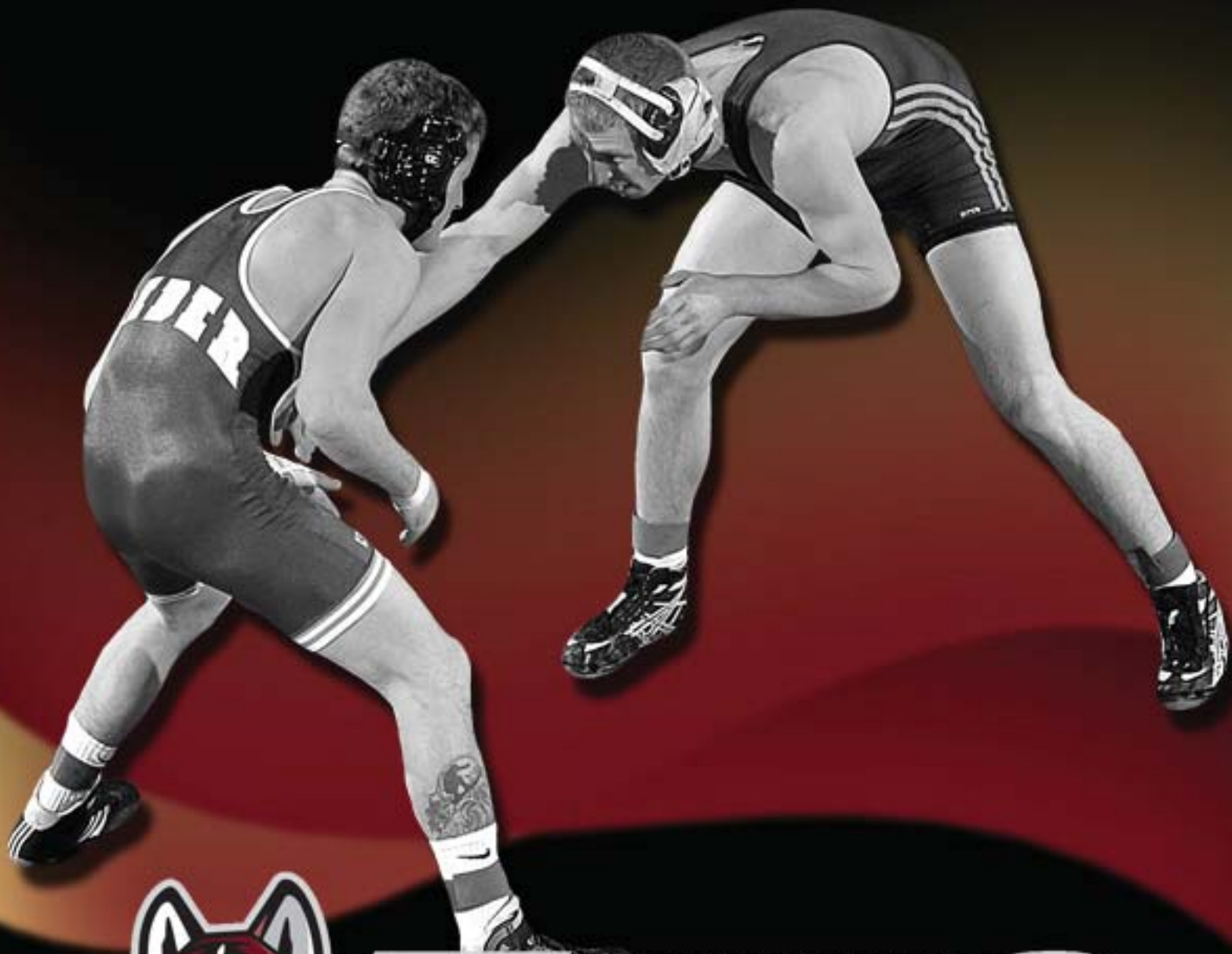
Bloomsburg University Wrestling

2009-10 Individual Statistics

Name	Dual	Trn.	Overall	Career	Pin	Tech.	Major
James Bak	4-8	1-5	4-13	4-12			
Jason Guffey	10-6	12-8	22-14	80-57	3	5	2
Dan Gaylord	3-6	3-7	6-13	6-13	2		
Jeremiah Biddle	2-2	2-8	4-10	4-16	2	1	
Ryan Toussaint		3-8	3-8	3-8	2		
Ian De Sol	0-4	2-11	2-15	2-23	1		
Ricky Donald				75-50			
Kyle Vincelli				1-7			
Frank Hickman	4-1	13-3	17-4	17-4	1	1	2
Joe McAuley	1-2	9-8	11-10	11-10	2		
Nate Russell		0-4	0-4	0-4			
Chris Smith		9-8	9-8	9-8	1		
Josh Roosa	11-6	9-6	20-12	20-12	1		5
Charlie Croce		2-4	2-4	2-4			
Matt Moley	15-1	13-4	28-5	125-39	7	5	9
Bryce Busler	1-1	18-9	19-10	19-10	2	2	2
Mike Wechsler				6-11			
Josh Veltre	1-1	6-12	7-13	7-13			3
Mike Dessino	4-2	16-10	20-12	20-12	7	1	1
Rick Schmelyun	11-2	18-7	29-9	117-57	10	5	7
Nate Graham	11-4	16-9	27-11	54-37	6		2
Dustin Saksek		0-6	0-6	0-6			
Derek Coffey	6-10	14-7	20-17	20-17	5	1	2
Brian Shaw	6-7	6-9	12-15	26-51	1		1
Jake Dabashinsky	3-3	10-6	13-9	21-21	7		
Mike Grillakis		6-10	6-10	6-10			
Zac Walsh	6-12	12-10	18-22	28-48	4		1
Nate Knepp		1-6	1-6	1-6			

* Red-Shirt Wrestler

Record Book



BLOOMSBURG
HUSKIES
UNIVERSITY

Bloomsburg University Wrestling

Year-By-Year Results 1936-Present

1936-37

Kenneth Harner - Head Coach

Record: 0-3

BSTC	vs.	East Stroudsburg	L
BSTC	vs.	Mansfield	L
BSTC	vs.	Mansfield	L

1937-38

Kenneth Harner - Head Coach

1-3 Overall

BSTC	vs.	Mansfield	L, 13-23
BSTC	vs.	Keystone	L, 13-25
BSTC	vs.	Brooklyn	W, 15.5-14.5
BSTC	vs.	Keystone	L, 13-25

1938-39

Kenneth Harner - Head Coach

1-4 Overall

BSTC	vs.	E. Stroudsburg	L, 6-28
BSTC	vs.	Mansfield	L, 13-21
BSTC	vs.	Keystone	W, 20-18
BSTC	vs.	Brooklyn	L, 0-36
BSTC	vs.	Lock Haven	L, 16-20

1939-1954 NO TEAM

1954-55

Jack Yoke - Head Coach

1-6 Overall

BSTC	vs.	Millersville	L, 10-22
BSTC	vs.	West Chester	L, 0-26
BSTC	vs.	East Stroudsburg	L, 11-16
BSTC	vs.	Wilkes	L, 13-19
BSTC	vs.	Lock Haven	L, 0-27
BSTC	vs.	Indiana (Pa.)	L, 15-16
BSTC	vs.	Lincoln	W, 40-0

1955-56

Walter Blair - Head Coach

5-3 Overall

BSTC	vs.	Pennsylvania Military	W, 28-6
BSTC	vs.	East Stroudsburg	W, 22-10
BSTC	vs.	Millersville	L, 10-21
BSTC	vs.	Wilkes	W, 17-15
BSTC	vs.	Lock Haven	L, 5-30
BSTC	vs.	Indiana (Pa.)	W, 21-11

BSTC	vs.	West Chester	L, 5-24
BSTC	vs.	Lincoln	W, 27-5

1956-57

Walter Blair - Head Coach

6-3 Overall

BSTC	vs.	Shippensburg	W, 20-8
BSTC	vs.	Pennsylvania Military	W, 20-8
BSTC	vs.	Lycoming	W, 23-15
BSTC	vs.	Millersville	L, 11-18
BSTC	vs.	Lock Haven	L, 3-27
BSTC	vs.	East Stroudsburg	W, 17-11
BSTC	vs.	Indiana (Pa.)	W, 18-11
BSTC	vs.	Lincoln	W, 32-0
BSTC	vs.	West Chester	L, 14-16

1957-58

Russ Houk - Head Coach

5-2 Overall

BSTC	vs.	Shippensburg	W, 27-13
BSTC	vs.	Millersville	L, 11-15
BSTC	vs.	Lock Haven	L, 11-16
BSTC	vs.	East Stroudsburg	W, 24-7
BSTC	vs.	Indiana (PA)	W, 16-11
BSTC	vs.	Lincoln	W, 31-3
BSTC	vs.	Lycoming	W, 21-11

1958-59

Russ Houk - Head Coach

9-1 Overall

BSTC	vs.	Cortland	W, 33-3
BSTC	vs.	Shippensburg	W, 28-2
BSTC	vs.	Lycoming	W, 25-3
BSTC	vs.	Millersville	W, 15-11
BSTC	vs.	Lock Haven	L, 12-20
BSTC	vs.	East Stroudsburg	W, 24-6
BSTC	vs.	Indiana (PA)	W, 25-2
BSTC	vs.	Lincoln	W, 29-3
BSTC	vs.	West Chester	W, 23-2
BSTC	vs.	Waynesburg	W, 15-11

1959-60

Russ Houk - Head Coach

10-0 Overall

BSC	vs.	Shippensburg	W, 18-8
BSC	vs.	Millersville	W, 17-9

2010-11

Bloomsburg University Wrestling

Year-By-Year Results 1936-Present

BSC	vs.	Rochester IT	W, 15-9
BSC	vs.	Lock Haven	W, 15-11
BSC	vs.	East Stroudsburg	W, 22-6
BSC	vs.	Indiana (Pa.)	W, 34-0
BSC	vs.	Lincoln	W, 34-0
BSC	vs.	Waynesburg	W, 19-11
BSC	vs.	West Chester	W, 30-0
BSC	vs.	Cortland	W, 26-8

1960-61

Russ Houk - Head Coach

1-1 Overall

BSC	vs.	Mankato	L, 8-20
BSC	vs.	Winona	W, 15-12
BSC	vs.	Wisconsin State	W, 20-5
BSC	vs.	Shippensburg	W, 20-8
BSC	vs.	Millersville	W, 31-2
BSC	vs.	Rochester IT	W, 18-10
BSC	vs.	Lock Haven	W, 14-13
BSC	vs.	Appalachian State	W, 17-10
BSC	vs.	East Stroudsburg	W, 26-10
BSC	vs.	Waynesburg	W, 22-4
BSC	vs.	Lincoln	W, 31-3
BSC	vs.	West Chester	W, 24-0

1961-62

Russ Houk - Head Coach

10-1 Overall

BSC	vs.	C.W. Post	W, 24-0
BSC	vs.	Winona	W, 25-10
BSC	vs.	Shippensburg	W, 30-0
BSC	vs.	Millersville	W, 17-11
BSC	vs.	Rochester	W, 27-3
BSC	vs.	Lock Haven	L, 12-16
BSC	vs.	East Stroudsburg	W, 31-2
BSC	vs.	Lincoln	W, 36-0
BSC	vs.	Appalachian State	W, 22-6
BSC	vs.	Waynesburg	W, 20-5
BSC	vs.	West Chester	W, 14-11

1962-63

Russ Houk - Head Coach

14-0 Overall

BSC	vs.	Nebraska	W, 26-0
BSC	vs.	Wisconsin	W, 36-5
BSC	vs.	Indiana (Pa.)	W, 29-3

BSC	vs.	C.W. Post	W, 25-3
BSC	vs.	Millersville	W, 32-3
BSC	vs.	East Stroudsburg	W, 22-8
BSC	vs.	Southern Illinois	W, 17-14
BSC	vs.	Rochester IT	W, 31-2
BSC	vs.	E. Stroudsburg	W, 32-3
BSC	vs.	Waynesburg	W, 18-11
BSC	vs.	Lincoln	W, 38-0
BSC	vs.	Shippensburg	W, 26-6
BSC	vs.	West Chester	W, 23-6
BSC	vs.	Lock Haven	W, 18-9

1963-64

Russ Houk - Head Coach

10-3 Overall

BSC	vs.	Indiana (Pa.)	W, 27-7
BSC	vs.	Appalachian	W, 33-0
BSC	vs.	Lock Haven	W, 23-14
BSC	vs.	Millersville	W, 34-5
BSC	vs.	Indiana (Pa.)	L, 16-23
BSC	vs.	Rochester IT	W, 22-8
BSC	vs.	Lincoln	W, 27-3
BSC	vs.	Waynesburg	W, 25-3
BSC	vs.	Shippensburg	W, 29-3
BSC	vs.	West Chester	W, 22-9
BSC	vs.	Lock Haven	L, 13-23
BSC	vs.	Lehigh	L, 13-17

1964-65

Russ Houk - Head Coach

12-0-1

BSC	vs.	Southern Illinois	W, 26-13
BSC	vs.	Indiana	W, 20-14
BSC	vs.	Purdue	W, 22-7
BSC	vs.	Miami OH	W, 20-9
BSC	vs.	Millersville	W, 30-3
BSC	vs.	Appalachian State	W, 20-6
BSC	vs.	Rochester IT	W, 28-0
BSC	vs.	East Stroudsburg	W, 20-8
BSC	vs.	Waynesburg	T, 12-12
BSC	vs.	Shippensburg	W, 23-6
BSC	vs.	Lock Haven	W, 22-12
BSC	vs.	Mansfield	W, 26-8
BSC	vs.	West Chester	W, 22-11

Bloomsburg University Wrestling

Year-By-Year Results 1936-Present

1965-66

Russ Houk - Head Coach

10-1-1 Overall

BSC	vs.	Southern Illinois	T, 19-19
BSC	vs.	Indiana (Pa.)	W, 15-12
BSC	vs.	Lycoming	W, 21-20
BSC	vs.	Oswego	W, 24-8
BSC	vs.	Millersville	W, 36-0
BSC	vs.	East Stroudsburg	W, 20-14
BSC	vs.	Rochester IT	W, 31-8
BSC	vs.	Waynesburg	W, 20-10
BSC	vs.	Shippensburg	W, 28-5
BSC	vs.	Lock Haven	L, 6-26
BSC	vs.	Mansfield	W, 33-3
BSC	vs.	West Chester	W, 21-13

1966-67

Russ Houk - Head Coach

10-5 Overall

BSC	vs.	Oswego	W, 20-9
BSC	vs.	Southern Illinois	L, 9-28
BSC	vs.	Winona	L, 14-23
BSC	vs.	Purdue	W, 26-11
BSC	vs.	Indiana (Pa.)	L, 9-22
BSC	vs.	Springfield	W, 17-12
BSC	vs.	Mansfield	W, 29-13
BSC	vs.	Wisconsin	W, 27-8
BSC	vs.	Millersville	W, 36-5
BSC	vs.	Rochester IT	W, 34-3
BSC	vs.	East Stroudsburg	L, 14-23
BSC	vs.	Waynesburg	W, 18-12
BSC	vs.	Shippensburg	W, 31-6
BSC	vs.	Lock Haven	L, 16-22
BSC	vs.	West Chester	W, 32-9

1967-68

Russ Houk - Head Coach

8-4-1 Overall

BSC	vs.	Appalachian State	T, 16-16
BSC	vs.	Miami (OH)	W, 15-12
BSC	vs.	Indiana PA.	L, 5-25
BSC	vs.	Mansfield	W, 28-10
BSC	vs.	Millersville	W, 33-6
BSC	vs.	Oswego	W, 18-9
BSC	vs.	East Stroudsburg	W, 19-18
BSC	vs.	Clarion	W, 30-10

BSC	vs.	S. Illinois	W, 15-14
BSC	vs.	Waynesburg	L, 15-18
BSC	vs.	Shippensburg	W, 39-5
BSC	vs.	Lock Haven	L, 13-24
BSC	vs.	West Chester	L, 14-20

1968-69

Russ Houk - Head Coach

11-3-1 Overall

BSC	vs.	Appalachian State	W, 18-15
BSC	vs.	Old Dominion	W, 27-5
BSC	vs.	Ashland	W, 27-11
BSC	vs.	Mansfield	W, 36-0
BSC	vs.	Indiana (Pa.)	W, 24-12
BSC	vs.	Southern Illinois	L, 9-23
BSC	vs.	Millersville	W, 35-6
BSC	vs.	Oswego	W, 19-16
BSC	vs.	Clarion	W, 30-7
BSC	vs.	Kutztown	W, 40-3
BSC	vs.	Waynesburg	W, 22-8
BSC	vs.	East Stroudsburg	L, 14-22
BSC	vs.	Shippensburg	W, 28-13
BSC	vs.	Lock Haven	L, 15-25
BSC	vs.	West Chester	T, 17-17



Coach Russ Houk: 1957-1971

Bloomsburg University Wrestling

Year-By-Year Results 1936-Present

1969-70

Russ Houk - Head Coach

11-5 Overall

BSC	vs.	Appalachian	W, 22-13
BSC	vs.	Old Dominion	W, 33-3
BSC	vs.	Massachusetts	W, 27-9
BSC	vs.	Ohio Univ.	L, 5-32
BSC	vs.	Indiana (Pa.)	L, 29-11
BSC	vs.	Oswego	W, 27-11
BSC	vs.	Clarion	L, 9-23
BSC	vs.	Kutztown	W, 30-5
BSC	vs.	California (Pa.)	W, 34-6
BSC	vs.	Waynesburg	W- Forfeit
BSC	vs.	Millersville	W, 30-7
BSC	vs.	Shippensburg	W, 25-8
BSC	vs.	Lock Haven	L, 9-25
BSC	vs.	East Stroudsburg	L, 14-20
BSC	vs.	West Chester	W, 21-17

1970-71

Russ Houk - Head Coach

12-8 Overall

BSC	vs.	Indiana (Pa.)	W, 18-17
BSC	vs.	Eastern Michigan	L, 16-17
BSC	vs.	Miami OH.	L, 16-18
BSC	vs.	Ohio Univ.	L, 3-31
BSC	vs.	Ball State	W, 24-12
BSC	vs.	Ashland	W, 18-12
BSC	vs.	Slippery Rock	W, 18-17
BSC	vs.	Appalachian State	W, 22-16
BSC	vs.	East Stroudsburg	W, 19-16
BSC	vs.	Kutztown	W, 37-15
BSC	vs.	Iowa State	W, 6-5
BSC	vs.	Clarion	L, 15-28
BSC	vs.	Shippensburg	L, 16-23
BSC	vs.	Waynesburg	W, 20-11
BSC	vs.	California (Pa.)	L, 15-20
BSC	vs.	Millersville	W, 32-24
BSC	vs.	Lock Haven	L, 19-14
BSC	vs.	Oswego	W, 21-13
BSC	vs.	East Stroudsburg	L, 18-20
BSC	vs.	West Chester	W, 22-14

1971-72

No Team

1972-73

Roger Sanders - Head Coach

7-8 Overall

BSC	vs.	Edinboro	W, 24-18
BSC	vs.	Mansfield	L, 21-24
BSC	vs.	East Stroudsburg	W, 19-18
BSC	vs.	Slippery Rock	L, 13-25
BSC	vs.	Trenton	L, 18-20
BSC	vs.	Clarion	L, 9-35
BSC	vs.	West Chester	W, 21-20
BSC	vs.	Shippensburg	W, 28-18
BSC	vs.	Indiana (Pa.)	W, 37-12
BSC	vs.	California (Pa.)	L, 21-22
BSC	vs.	Kutztown	W, 32-12
BSC	vs.	Lock Haven	L, 15-26
BSC	vs.	Springfield	L, 17-25
BSC	vs.	Millersville	W, 23-20
BSC	vs.	East Stroudsburg	L, 20-21

1973-74

Roger Sanders - Head Coach

16-3 Overall

BSC	vs.	Montclair	W, 22-15
BSC	vs.	Army	W, 26-14
BSC	vs.	Buffalo	L, 14-18
BSC	vs.	Princeton	W, 22-9
BSC	vs.	Mansfield	W, 36-20
BSC	vs.	Slippery Rock	W, 24-13
BSC	vs.	Trenton State	W, 31-20
BSC	vs.	East Stroudsburg	W, 25-16
BSC	vs.	Oklahoma	L, 15-26
BSC	vs.	Bucknell	W, 33-5
BSC	vs.	West Chester	W, 22-15
BSC	vs.	Clarion	L, 11-26
BSC	vs.	Shippensburg	W, 39-3
BSC	vs.	Indiana (Pa.)	W, 28-9
BSC	vs.	Edinboro	W, 23-22
BSC	vs.	Kutztown	W, 26-18
BSC	vs.	Lock Haven	L, 29-20
BSC	vs.	Millersville	W, 24-18
BSC	vs.	East Stroudsburg	W, 25-18
E. Stroudsburg Open: 5th			

Bloomsburg University Wrestling

Year-By-Year Results 1936-Present

1974-75

Roger Sanders - Head Coach

11-3-1 Overall

BSC	vs.	Mansfield	W, 25-17
BSC	vs.	Slippery Rock	L, 12-29
BSC	vs.	East Stroudsburg	W, 23-9
BSC	vs.	Trenton State	W, 18-17
BSC	vs.	Montclair	L, 15-20
BSC	vs.	West Chester	W, 30-8
BSC	vs.	Shippensburg	W, 33-11
BSC	vs.	Massachusetts	W, 35-6
BSC	vs.	Indiana (Pa.)	W, 25-9
BSC	vs.	Kutztown	W, 37-6
BSC	vs.	Bucknell	T, 21-21
BSC	vs.	Lock Haven	W, 26-16
BSC	vs.	Millersville	W, 34-9
BSC	vs.	East Stroudsburg	W, 21-13
BSC	vs.	Navy	L, 6-29

Millersville Tournament: 4th

Wilkes Tournament: 5th

1975-76

Roger Sanders - Head Coach

9-8-1 Overall

BSC	vs.	Bucknell	W, 37-3
BSC	vs.	Mansfield	W, 25-16
BSC	vs.	Trenton State	W, 20-16
BSC	vs.	East Stroudsburg	W, 26-9
BSC	vs.	Slippery Rock	L, 13-27
BSC	vs.	Navy	L, 11-29
BSC	vs.	Penn State	L, 9-33
BSC	vs.	Clarion	L, 8-44
BSC	vs.	Buffalo	L, 15-28
BSC	vs.	Oswego	W, 33-9
BSC	vs.	Shippensburg	W, 29-18
BSC	vs.	Indiana (Pa.)	W, 25-17
BSC	vs.	Pittsburgh	L, 19-20
BSC	vs.	West Chester	L, 17-26
BSC	vs.	Kutztown	W, 38-6
BSC	vs.	Lock Haven	L, 16-22
BSC	vs.	Millersville	W, 30-8
BSC	vs.	East Stroudsburg	T, 19-19

Bucknell Invitational: 4th

Keystone Invitational: 1st

Univ. of Del. Invitational: 3rd

1976-77

Roger Sanders - Head Coach

11-4 Overall

BSC	vs.	Mansfield	W, 38-9
BSC	vs.	Pittsburgh	L, 13-23
BSC	vs.	Kutztown	W, 40-20
BSC	vs.	Morgan State	W, 36-9
BSC	vs.	George Mason	W, 39-5
BSC	vs.	Clarion	L, 14-43
BSC	vs.	Bucknell	W, 11-3
BSC	vs.	Clarion	W, 21-20
BSC	vs.	Shippensburg	L, 21-23
BSC	vs.	Indiana (Pa.)	W, 35-11
BSC	vs.	West Chester	W, 23-9
BSC	vs.	Lock Haven	L, 15-18
BSC	vs.	Buffalo	W, 31-22
BSC	vs.	Millersville	W, 22-5
BSC	vs.	East Stroudsburg	W, 27-9

Bucknell Invitational: 1st

Univ of Del. Invitational: 2nd

1977-78

Roger Sanders - Head Coach

11-3 Overall

BSC	vs.	Mansfield	W, 39-5
BSC	vs.	Pittsburgh	W, 33-11
BSC	vs.	Calif-Poly	L, 8-29
BSC	vs.	Kutztown	W, 38-7
BSC	vs.	Virg. Commonwealth	W, 44-2
BSC	vs.	Hampton	W, 59-0
BSC	vs.	George Mason	W, 35-3
BSC	vs.	Bucknell	W, 29-24
BSC	vs.	West Chester	W, 39-3
BSC	vs.	Penn State	L, 14-19
BSC	vs.	Indiana (Pa.)	W, 39-5
BSC	vs.	Lock Haven	W, 25-8
BSC	vs.	Buffalo	L, 16-25
BSC	vs.	Millersville	W, 33-6

Univ. of Del. Tournament: 1st

1978-79

Roger Sanders - Head Coach

16-2-1 Overall

BSC	vs.	Pittsburgh	W, 20-11
BSC	vs.	Mansfield	W, 50-0
BSC	vs.	Shippensburg	W, 43-0

2010-11

Bloomsburg University Wrestling

Year-By-Year Results 1936-Present

BSC	vs.	California-Poly	L, 14-24
BSC	vs.	Kutztown	W, 44-3
BSC	vs.	Georgia	W, 34-9
BSC	vs.	Hofstra	L, 18-16
BSC	vs.	Clemson	W, 26-14
BSC	vs.	Ohio Univ.	W, 38-3
BSC	vs.	West Virginia	L, 32-6
BSC	vs.	Akron	W, 37-3
BSC	vs.	Clarion	L, 15-16
BSC	vs.	Indiana (Pa.)	W, 41-3
BSC	vs.	Penn State	L, 41-2
BSC	vs.	Cleveland State	T, 19-19
BSC	vs.	Lock Haven	L, 30-8
BSC	vs.	Millersville	W, 26-14
BSC	vs.	West Chester	W, 38-9
BSC	vs.	East Stroudsburg	W-Forfeit

Bucknell Invitational: 1st

Univ of Del. Invitational: 2nd

Central NJ Open: 1st

Univ. of Delaware Invitational: 1st

BSC Invitational: 1st

Wilkes Open: 2nd

PSAC Champ: 1st

EWL Tournament: 2nd

1979-80

Roger Sanders - Head Coach

11-3 Overall

BSC	vs.	Millersville	W, 38-3
BSC	vs.	Shippensburg	W, 39-6
BSC	vs.	Pittsburgh	W, 41-16
BSC	vs.	Hofstra	W, 22-21
BSC	vs.	Clarion	L, 12-18
BSC	vs.	Indiana (Pa.)	W, 35-22
BSC	vs.	Syracuse	W, 21-0
BSC	vs.	Mansfield	W, 50-23
BSC	vs.	Cleveland State	L, 17-18
BSC	vs.	Lock Haven	W, 30-11
BSC	vs.	West Virginia	W, 28-4
BSC	vs.	East Stroudsburg	W, 42-15
BSC	vs.	Penn State	L, 23-24
BSC	vs.	Temple	W, 29-24

ESU Open: 1st

BSC Invitational: 1st

Wilkes Open: 2nd

Univ. of Delaware Invitational: 1st

PSAC Championships: 1st

EWL Championships: 2nd

1980-81

Roger Sanders - Head Coach

11-6 Overall

BSC	vs.	Mansfield	W, 42-8
BSC	vs.	Millersville	L, 18-25
BSC	vs.	Iowa State	L, 2-38
BSC	vs.	Slippery Rock	W, 19-15
BSC	vs.	West Chester	W, 36-15
BSC	vs.	Clarion	L, 16-31
BSC	vs.	Lock Haven	W, 24-12
BSC	vs.	Cleveland St.	L, 18-24
BSC	vs.	West Virginia	W, 25-19
BSC	vs.	Indiana (Pa.)	W, 41-10
BSC	vs.	Penn State	W, 20-18
BSC	vs.	Temple	W, 27-15
BSC	vs.	Shippensburg	W, 29-4
BSC	vs.	East Stroudsburg	W, 26-8
BSC	vs.	Missouri	L, 6-31
BSC	vs.	Pittsburgh	W, 30-12

BSC Invitational: 2nd

Lock Haven Invitational: 4th

Delaware Invitational: 1st

PSAC Championships: 2nd

EWL Championships: 1st

NCAA Div. 1 Tournament: 35th

1981-82

Roger Sanders - Head Coach

14-2 Overall

BSC	vs.	Shippensburg	W, 38-3
BSC	vs.	Millersville	W, 31-8
BSC	vs.	Iowa State	L, 2-47
BSC	vs.	Drake	W, 29-11
BSC	vs.	Minnesota	L, 8-32
BSC	vs.	Mankato	W, 36-15
BSC	vs.	Indiana (Pa.)	W, 36-10
BSC	vs.	Slippery Rock	W, 26-12
BSC	vs.	West Chester	W, 35-7
BSC	vs.	Lock Haven	L, 19-22
BSC	vs.	Cleveland State	W, 30-8
BSC	vs.	Pittsburgh	W, 27-11
BSC	vs.	East Stroudsburg	W, 38-6
BSC	vs.	Kutztown	W, 49-0

Bloomsburg University Wrestling

Year-By-Year Results 1936-Present

BSC vs. West Virginia W, 38-3
BSC vs. Clarion W, 20-19
BU Invitational: 1st
Bucknell Invitational: 1st
Sheridan Invitational: 3rd
Mat-USA Tournament: 3rd
PSAC Championships: 1st
EWL Championships: 2nd
NCAA Championships: 13th

BU vs. Penn State L, 6-41
BU vs. Kutztown W, 47-0
BU Invitational: 1st
Keystone Invitational: 1st
Sheridan Invitational: 6th
Wilkes Open: 1st
W. Chester Invitational: 1st
PSAC Championships: 1st
EWL Championships: 5th

1982-83

Roger Sanders - Head Coach

6-7 Overall

BSC vs. Shippensburg W, 38-4
BSC vs. Kutztown W, 47-0
BSC vs. Indiana (Pa.) W, 39-6
BSC vs. Slippery Rock W, 24-19
BSC vs. West Chester W, 29-14
BSC vs. Clarion L, 18-28
BSC vs. Lock Haven L, 16-24
BSC vs. Cleveland State L, 14-27
BSC vs. Millersville W, 29-10
BSC vs. West Virginia L, 19-20
BSC vs. Pittsburgh L, 18-26
BSC vs. Navy L, 9-31
BSC vs. Penn State L, 7-38

1984-85

Roger Sanders - Head Coach

15-5 Overall

BU vs. Lock Haven L, 16-23
BU vs. Oregon State L, 21-24
BU vs. Millersville W, 37-3
BU vs. Shippensburg W, 37-3
BU vs. Delaware State W, 55-0
BU vs. George Mason W, 52-0

1983-84

Roger Sanders - Head Coach

14-4 Overall

BU vs. Lock Haven L, 19-23
BU vs. Shippensburg W, 22-15
BU vs. Millersville W, 44-3
BU vs. Indiana (Pa.) W, 31-11
BU vs. Michigan W, 33-17
BU vs. Indiana State W, 57-0
BU vs. Shippensburg W, 41-3
BU vs. Slippery Rock W, 42-3
BU vs. East Stroudsburg W, 45-5
BU vs. West Chester W, 37-7
BU vs. Clarion W, 32-16
BU vs. Pittsburgh W, 31-16
BU vs. West Virginia W, 33-9
BU vs. Lock Haven L, 13-22
BU vs. Mansfield W, 39-12
BU vs. Cleveland State L, 13-26



Coach Roger Sanders: 1972-1993

Bloomsburg University Wrestling

Year-By-Year Results 1936-Present

BU	vs.	Virginia	W, 32-3
BU	vs.	North Carolina State	W, 19-18
BU	vs.	Tennessee	W, 26-13
BU	vs.	Louisiana State	W, 9-30
BU	vs.	West Chester	W, 39-9
BU	vs.	Clarion	W, 28-13
BU	vs.	Kutztown	W, 36-60
BU	vs.	Lock Haven	L, 18-21
BU	vs.	Mansfield	W, 41-11
BU	vs.	Cleveland State	L, 29-14
BU	vs.	Slippery Rock	W, 19-16
BU	vs.	Pittsburgh	W, 33-17
BU	vs.	East Stroudsburg	W, 37-7
BU	vs.	Penn State	L, 19-27

BU Invitational: 1st

Sheridan Invitational: 1st

Wilkes Open: 1st

West Chester Invitational: 1st

PSAC Championships: 1st

EWL Championships: 3rd

NCAA Div. 1: 10th

1985-86

Roger Sanders - Head Coach

12-5 Overall

BU	vs.	Oregon State	W, 24-13
BU	vs.	Millersville	W, 32-8
BU	vs.	Iowa	L, 14-30
BU	vs.	Lock Haven	W, 25-15
BU	vs.	Shippensburg	W, 50-3
BU	vs.	Virginia	W, 36-9
BU	vs.	Syracuse	W, 27-17
BU	vs.	Iowa State	L, 9-31
BU	vs.	Oklahoma	W, 31-15
BU	vs.	Northern Iowa	W, 20-18
BU	vs.	Clarion	L, 10-33
BU	vs.	West Virginia	L, 19-21
BU	vs.	Lock Haven	W, 24-19
BU	vs.	Cleveland State	W, 22-19
BU	vs.	Slippery Rock	W, 42-7
BU	vs.	Pittsburgh	W, 30-12
BU	vs.	Penn State	L, 16-24

BU Invitational: 1st

Keystone Invitational: 1st

Sheridan Invitational: 2nd

PSAC Championships: 1st

EWL Championships: 3rd

1986-87

Roger Sanders - Head Coach

12-7 Overall

BU	vs.	Iowa State	L, 17-22
BU	vs.	Oregon State	W, 46-3
BU	vs.	Lock Haven	W, 17-16
BU	vs.	Wyoming	W, 29-9
BU	vs.	Arizona State	W, 24-13
BU	vs.	Penn State	L, 15-21
BU	vs.	Wisconsin	W, 20-17
BU	vs.	Northern Iowa	L, 16-19
BU	vs.	Clarion	L, 20-21
BU	vs.	Montana	W, 36-5
BU	vs.	Arizona State	L, 18-20
BU	vs.	Brigham Young	W, 28-14
BU	vs.	Pittsburgh	W, 29-15
BU	vs.	West Virginia	W, 19-15
BU	vs.	Lock Haven	W, 18-17
BU	vs.	Army	L, 19-20
BU	vs.	Cleveland State	W, 22-21
BU	vs.	Slippery Rock	W, 22-20
BU	vs.	Penn State	L, 5-35

BU Invitational: 1st

Lehigh Invitational: 1st

Sheridan Invitational: 2nd

Wilkes Open: 1st

PSAC Championships: 3rd

EWL Championships: 3rd

1987-88

Roger Sanders - Head Coach

12-5-1 Overall

BU	vs.	East Stroudsburg	W, 32-8
BU	vs.	Shippensburg	W, 34-19
BU	vs.	Lock Haven	L, 9-28
BU	vs.	Iowa State	L, 12-26
BU	vs.	Southern Illinois St.	W, 22-12
BU	vs.	Lock Haven	W, 20-19
BU	vs.	Northern Iowa	L, 6-26
BU	vs.	Minnesota	L, 15-19
BU	vs.	Clarion	W, 25-12
BU	vs.	Millersville	W, 23-11
BU	vs.	North Carolina	W, 21-14
BU	vs.	Pittsburgh	W, 19-7
BU	vs.	West Virginia	W, 24-13

Bloomsburg University Wrestling

Year-By-Year Results 1936-Present

BU vs. Lock Haven L, 16-21
BU vs. Cleveland State W, 19-18
BU vs. Army W, 21-15
BU vs. Slippery Rock W, 24-13
BU vs. Penn State T, 18-18

BU Invitational: 1st
Lehigh Invitational: 2nd
EWL Championships: 3rd

1988-89

Roger Sanders - Head Coach

13-7 Overall

BU vs. Iowa State L, 12-22
BU vs. East Stroudsburg W, 33-8
BU vs. Oregon State W, 28-9
BU vs. Shippensburg W, 39-6
BU vs. Edinboro W, 25-17
BU vs. Northern Iowa L, 18-17
BU vs. Arizona State L, 12-29
BU vs. Indiana W, 19-16
BU vs. Lock Haven L, 12-22
BU vs. North Carolina W, 18-14
BU vs. Clarion W, 23-14
BU vs. Millersville L, 17-18
BU vs. Morgan State W, 39-8
BU vs. Pittsburgh W, 22-15
BU vs. West Virginia W, 19-16
BU vs. Lock Haven L, 14-24
BU vs. Cleveland State L, 18-19
BU vs. Army W, 18-12
BU vs. Slippery Rock W, 26-9
BU vs. Penn State L, 8-30

1989-90

Roger Sanders - Head Coach

17-7 Overall

BU vs. East Stroudsburg W, 27-8
BU vs. Cornell W, 17-15
BU vs. Liberty W, 26-12
BU vs. Ithaca W, 23-18
BU vs. Shippensburg W, 39-9
BU vs. Edinboro L, 19-22
BU vs. Brigham Young W, 28-14
BU vs. Arizona State L, 12-30
BU vs. Clarion W, 19-18
BU vs. Minnesota L, 12-24

BU vs. Iowa L, 3-37
BU vs. Central Oklahoma W, 24-9
BU vs. Oklahoma L, 15-20
BU vs. Millersville W, 35-5
BU vs. Clarion W, 20-17
BU vs. North Carolina State W, 23-15
BU vs. Pittsburgh W, 31-6
BU vs. West Virginia L, 11-22
BU vs. Lock Haven W, 25-10
BU vs. Cleveland State W, 23-13
BU vs. Slippery Rock W, 35-6
BU vs. Penn State W, 23-14
BU vs. Wilkes W, 21-11
BU vs. Army L, 15-20

BU Invitational: 2nd
PSAC Championships: 1st
EWL Championships: 3rd

1990-91

Roger Sanders - Head Coach

15-2-1 Overall

BU vs. East Stroudsburg W, 35-3
BU vs. Shippensburg W, 35-11
BU vs. Edinboro W, 19-14
BU vs. Wagner W, 48-14
BU vs. William & Mary W, 34-9
BU vs. Rutgers W, 38-6
BU vs. Franklin & Marshall W, 30-6
BU vs. Millersville W, 32-9
BU vs. Clarion T, 20-20
BU vs. West Virginia L, 7-32
BU vs. Pittsburgh W, 19-15
BU vs. Lock Haven L, 9-24
BU vs. Cleveland State W, 26-8
BU vs. Army W, 21-14
BU vs. Slippery Rock W, 24-12
BU vs. California (Pa.) W, 33-13
BU vs. Penn State W, 18-15
BU vs. Wilkes W, 25-11

BU Invitational: 2nd
PSAC Championships: 3rd
EWL Championships: 4th
James Madison Invitational: 1st

Bloomsburg University Wrestling

Year-By-Year Results 1936-Present

1991-92

Roger Sanders - Head Coach

8-6-3 Overall

BU	vs.	Navy	W, 17-15
BU	vs.	Drexel	W, 34-14
BU	vs.	North Carolina	T, 16-16
BU	vs.	Indiana	W, 21-16
BU	vs.	Minnesota	L, 15-18
BU	vs.	Clarion	L, 11-28
BU	vs.	West Virginia	L, 21-23
BU	vs.	Pittsburgh	L, 20-21
BU	vs.	Edinboro	W, 19-17
BU	vs.	Cleveland State	T, 18-18
BU	vs.	Shippensburg	W, 31-15
BU	vs.	Millersville	W, 29-9
BU	vs.	Bucknell	W, 25-13
BU	vs.	Penn State	L, 7-34
BU	vs.	Wilkes	W, 33-9
BU	vs.	Lock Haven	L, 14-20
BU	vs.	Lehigh	T, 20-20

1992-93

Roger Sanders - Head Coach

10-4 Overall

BU	vs.	Northern Iowa	L, 12-17
BU	vs.	Appalachian State	W, 24-10
BU	vs.	Minnesota	L, 3-20
BU	vs.	Brown	L, 10-21
BU	vs.	Clarion	W, 25-15
BU	vs.	West Virginia	W, 21-12
BU	vs.	Pittsburgh	W, 23-18
BU	vs.	Cleveland State	W, 29-13
BU	vs.	Edinboro	W, 30-10
BU	vs.	Penn State	L, 0-39
BU	vs.	Shippensburg	W, 47-2
BU	vs.	East Stroudsburg	W, 37-6
BU	vs.	Bucknell	W, 30-10
BU	vs.	Lehigh	W, 22-17

BU Invitational: 1st

Sheridan Invitational: 2nd

PSAC Championships: 3rd

NCAA Championships: 35th

1993-94

Tom Martucci - Head Coach

8-9 Overall

BU	vs.	Clemson	L, 12-24
----	-----	---------	----------

BU	vs.	Wyoming	W, 28-17
BU	vs.	Georgia State	W, 32-6
BU	vs.	Tenn.-Chattanooga	W, 23-17
BU	vs.	Army	L, 16-27
BU	vs.	Franklin & Marshall	W, 27-5
BU	vs.	Manhattan	W, 42-6
BU	vs.	Princeton	W, 39-9
BU	vs.	Clarion	L, 12-33
BU	vs.	West Virginia	L, 6-32
BU	vs.	Pittsburgh	L, 18-25
BU	vs.	Edinboro	L, 3-40
BU	vs.	Cleveland State	L, 18-21
BU	vs.	Millersville	W, 34-7
BU	vs.	East Stroudsburg	L, 17-25
BU	vs.	Citadel	W, 42-5
BU	vs.	Lock Haven	L, 10-24

BU Invitational: 1st

Sheridan Invitational: 1st

PSAC Championships: 4th

NCAA Championships: 34th

EWL Championships: 5th

1994-95

Tom Martucci - Head Coach

4-15 Overall

BU	vs.	Cornell	L, 6-27
BU	vs.	Brown	L, 13-22
BU	vs.	Wagner	W, 42-3
BU	vs.	Pittsburgh	L, 13-22
BU	vs.	Bucknell	L, 19-22
BU	vs.	James Madison	W, 29-6
BU	vs.	Clemson	W, 20-17
BU	vs.	Pennsylvania	L, 10-22
BU	vs.	Cornell	L, 4-31
BU	vs.	Clarion	L, 0-36
BU	vs.	West Virginia	L, 11-31
BU	vs.	Edinboro	L, 14-25
BU	vs.	Cleveland State	L, 16-22
BU	vs.	Rutgers	W, 26-12
BU	vs.	Virginia	L, 17-22
BU	vs.	East Stroudsburg	L, 12-22
BU	vs.	Rider	L, 12-26
BU	vs.	Duquesne	L, 17-24
BU	vs.	Lock Haven	L, 9-34

BU Invitational: 2nd

EWL Championships: 6th

Bloomsburg University Wrestling

Year-By-Year Results 1936-Present

1995-96

Tom Martucci - Head Coach

5-9 Overall

BU	vs.	Pittsburgh	L, 9-25
BU	vs.	Drexel	W, 22-18
BU	vs.	West Virginia	L, 10-25
BU	vs.	Rutgers	L, 13-19
BU	vs.	Duquesne	L, 7-24
BU	vs.	Ohio	L, 15-22
BU	vs.	Edinboro	L, 12-23
BU	vs.	Cleveland State	W, 31-16
BU	vs.	Morgan State	W, 41-9
BU	vs.	Franklin & Marshall	W, 27-15
BU	vs.	Lock Haven	L, 6-34
BU	vs.	East Stroudsburg	L, 22-13
BU	vs.	Rider	L, 3-34
BU	vs.	Clarion	L, 7-27

BU Invitational: 1st

Sheridan Invitational: 7th

EWL Championships: 5th

1996-97

Tom Martucci - Head Coach

8-7 Overall

BU	vs.	Pittsburgh	L, 6-28
BU	vs.	Duquesne	L, 16-19
BU	vs.	Rutgers	W, 24-9
BU	vs.	Clarion	W, 21-17
BU	vs.	West Virginia	W, 23-16
BU	vs.	Edinboro	L, 12-27
BU	vs.	Franklin & Marshall	W, 43-0
BU	vs.	George Mason	L, 10-23
BU	vs.	Millersville	W, 27-10
BU	vs.	Pennsylvania	L, 6-30
BU	vs.	Seton Hall	W, 29-12
BU	vs.	East Stroudsburg	W, 26-13
BU	vs.	Lock Haven	L, 9-26
BU	vs.	Cleveland State	W, 34-6
BU	vs.	Rider	L, 0-34

BU Invitational: 2nd

Lehigh Invitational: 7th

EWL Championships: 6th

PSAC Championships: 4th

NCAA Champs: 66th

1997-98

Tom Martucci - Head Coach

8-7 Overall

BU	vs.	Pittsburgh	L, 12-21
BU	at	West Virginia	L, 9-30
BU	vs.	Navy	W, 18-15
BU	at	Duquesne	W, 32-6
BU	at	Cleveland State	W, 33-3
BU	at	Edinboro	L, 9-32
BU	vs.	Bucknell	W, 29-7
BU	vs.	Franklin & Marsh	W, 34-14
BU	vs.	Millersville	W, 30-7
BU	at	Slippery Rock	W, 30-9
BU	at	Rutgers	L, 12-18
BU	vs.	East Stroudsburg	W, 30-7
BU	vs.	Lock Haven	L, 12-21
BU	vs.	Rider	L, 12-21

BU Invitational: 2nd

Sheridan Invitational: 8th

NCAA Champs: 66th

1998-99

Tom Martucci - Head Coach

7-6-1 Overall

BU	vs.	Pittsburgh	L, 12-22
BU	vs.	West Virginia	L, 7-32
BU	vs.	Clarion	L, 12-24
BU	vs.	Virginia Tech	L, 9-22
BU	vs.	Edinboro	L, 14-22
BU	vs.	Cleveland State	T, 18-18
BU	vs.	Bucknell	W, 23-18
BU	vs.	Franklin & Marshall	W, 40-12
BU	vs.	Millersville	W, 34-18
BU	vs.	Slippery Rock	W, 37-10
BU	vs.	East Stroudsburg	W, 32-9
BU	vs.	Rutgers	W, 21-12
BU	vs.	Lock Haven	L, 9-25
BU	vs.	Rider	L, 13-30

BU Invitational: 1st

Lehigh Invitational: 7th

EWL Championships: 6th

NCAA Champs: 42nd

PSAC Championships: 4th

Bloomsburg University Wrestling

Year-By-Year Results 1936-Present

1999-2000

Tom Martucci - Head Coach

9-2-1 Overall

BU	vs.	Pittsburgh	W, 18-17
BU	vs.	West Virginia	T, 19-19
BU	vs.	Clarion	W, 27-11
BU	vs.	Virginia Tech	L, 15-24
BU	vs.	Edinboro	L, 13-25
BU	vs.	Cleveland State	W, 24-12
BU	vs.	Bucknell	W, 35-6
BU	vs.	Millersville	W, 45-0
BU	vs.	Slippery Rock	W, 40-8
BU	vs.	Rutgers	W, 28-9
BU	vs.	Lock Haven	W, 21-18
BU	vs.	Rider	W, 21-19

BU Invitational: 1st

Okla. Gold Tournament: 4th

EWL Championships: 4th

PSAC Championships: 2nd

NCAA Championships: 33rd

2000-01

Tom Martucci - Head Coach

9-5 Overall

BU	at	Pittsburgh	L, 14-21
BU	vs.	Virginia Tech	L, 21-23
BU	vs.	Edinboro	L, 12-21
BU	at	Clarion	L, 17-18
BU	vs.	Cleveland State	W, 37-9
BU	vs.	West Virginia	W, 34-7
BU	at	Bucknell	W, 36-9
BU	vs.	Slippery Rock	W, 39-9
BU	vs.	Ohio	W, 28-8
BU	vs.	Millersville	W, 38-6
BU	vs.	Rutgers	W, 19-13
BU	at	East Stroudsburg	W, 27-6
BU	at	Lock Haven	L, 10-31
BU	at	Rider	W, 23-20

BU Invitational: 2nd

Oklahoma Gold Tournament: 7th

EWL Championships: 6th

PSAC Championships: 3rd

NCAA Champs: 31st

2001-02

Dave Kennedy - Head Coach

1-13 Overall

BU	vs.	Pittsburgh	L, 9-35
BU	at	Virginia Tech	L, 13-28
BU	at	Edinboro	L, 6-41
BU	vs.	Clarion	L, 14-28
BU	at	West Virginia	L, 7-40
BU	vs.	Nebraska	L, 6-49
BU	vs.	Cleveland State	L, 10-27
BU	vs.	Slippery Rock	W, 27-18
BU	vs.	Millersville	L, 16-24
BU	vs.	Ohio	L, 16-30
BU	at	Rutgers	L, 15-26
BU	vs.	East Stroudsburg	L, 19-22
BU	vs.	Rider	L, 10-31
BU	at	Lock Haven	L, 3-39

Okla. Gold Tournament: 8th

EWL Championships: 8th

PSAC Championships: 5th

NCAA Championships: 52nd

2002-03

Dan Wirnsberger - Head Coach

8-7-1 Overall

BU	vs.	Millersville	W, 20-12
BU	vs.	Army	L, 16-22
BU	vs.	Princeton	W, 39-3
BU	vs.	Findlay	W, 33-7
BU	at	Pittsburgh	W, 20-13
BU	vs.	West Virginia	L, 0-34
BU	at	Clarion	T, 18-18
BU	vs.	Virginia Tech	W, 25-14
BU	vs.	Slippery Rock	W, 31-12
BU	vs.	Millersville	W, 42-6
BU	vs.	Ohio	L, 10-24
BU	at	Cleveland State	L, 7-35
BU	vs.	Edinboro	L, 10-27
BU	vs.	Lock Haven	L, 12-29
BU	at	East Stroudsburg	W, 23-15
BU	vs.	Rutgers	L, 13-23

Oklahoma Gold Tournament: 6th

PSAC Championships: 3rd

Bloomsburg University Wrestling

Year-By-Year Results 1936-Present

2003-04

Dan Wirnsberger - Head Coach

8-8 Overall

BU	vs.	Pittsburgh	L, 3-41
BU	vs.	Findlay	W, 25-9
BU	vs.	Buffalo	L, 13-21
BU	vs.	East Illinois	W, 24-12
BU	vs.	Indiana	L, 15-23
BU	vs.	Ohio State	L, 13-25
BU	vs.	Cornell	L, 0-35
BU	at	West Virginia	L, 7-32
BU	vs.	Clarion	W, 23-12
BU	at	Virginia Tech	W, 22-18
BU	vs.	Slippery Rock	W, 33-15
BU	vs.	Millersville	W, 22-18
BU	at	Edinboro	L, 16-28
BU	vs.	Cleveland State	W, 23-17
BU	vs.	East Stroudsburg	W, 21-12
BU	at	Lock Haven	L, 16-20

Oklahoma Gold Classic: 8th

Beast of The East Tournament: 6th

EWL Championships: 5th

Penn. Conf. Champs: 3rd

Okla. Gold Tournament: 6th

PSAC Championships: 3rd

2004-05

Dan Wirnsberger - Head Coach

10-6 Overall

BU	at	Pittsburgh	L, 16-24
BU	at	Buffalo	W, 21-9
BU	vs.	Kent State	W, 21-18
BU	vs.	Ohio State	L, 17-18
BU	vs.	Ohio	W, 23-12
BU	vs.	Northern Illinois	L, 12-21
BU	vs.	Drexel	L, 15-22
BU	vs.	West Virginia	L, 16-22
BU	vs.	Slippery Rock	W, 34-9
BU	at	Clarion	W, 25-13
BU	at	Cleveland State	L, 25-18
BU	at	Rider	W, 34-4
BU	vs.	Edinboro	W, 21-14
BU	vs.	Lock Haven	W, 28-0
BU	at	Cornell	L, 9-28
BU	at	East Stroudsburg	W, 20-15

Beast of The East Tournament: 2nd

EWL Championships: 5th

PSAC Championships: 1st

2005-06

John Stutzman - Head Coach

11-9 Overall

BU	vs.	Pittsburgh	W, 17-16
BU	vs.	Findlay	W, 20-18
BU	vs.	Buffalo	L, 11-30
BU	vs.	Gardner-Webb	W, 28-9
BU	vs.	Purdue	L, 15-21
BU	vs.	Pennsylvania	W, 32-7
BU	vs.	Eastern Michigan	W, 21-13
BU	at	Nebraska	L, 12-30
BU	at	Drexel	L, 17-18
BU	vs.	Rider	W, 26-13
BU	vs.	Old Dominion	W, 19-13
BU	vs.	Indiana State	L, 0-42
BU	vs.	Virginia	L, 14-21
BU	at	West Virginia	L, 14-22
BU	vs.	Clarion	W, 42-0
BU	vs.	Cleveland State	W, 27-9
BU	at	Edinboro	L, 9-30
BU	at	Slippery Rock	L, 17-18
BU	at	Lock Haven	W, 21-15
BU	vs.	East Stroudsburg	W, 35-0

Oklahoma Gold Classic: 8th

Beast of The East Tournament: 6th

EWL Championships: 5th

Oklahoma Gold Classic: 9th

PSAC Championships: 3rd

2006-07

John Stutzman - Head Coach

12-9 Overall

BU	at	Pittsburgh	W, 14-30
BU	vs.	Binghamton	L, 40-10
BU	vs.	Pennsylvania	W, 9-24
BU	vs.	Hofstra	L, 15-27
BU	vs.	Central Michigan	L, 12-23
BU	vs.	Delaware State	L, 52-0
BU	vs.	Bucknell	W, 31-12
BU	vs.	Buffalo	W, 23-13
BU	at	Rider	L, 20-23
BU	vs.	Duquesne	W, 45-6
BU	vs.	Penn State	L, 9-22
BU	vs.	Virginia Tech	W, 33-6
BU	vs.	Arizona State	W, 32-10
BU	vs.	Kent State	L, 12-25

2010-11

Bloomsburg University Wrestling

Year-By-Year Results 1936-Present

BU vs. West Virginia W, 22-15
BU at Clarion W, 39-3
BU at Cleveland State W, 18-13
BU vs. Edinboro L, 10-24
BU vs. Drexel L, 15-18
BU vs. Lock Haven W, 24-9
BU at East Stroudsburg W, 30-9

PSAC Championships: 2nd

EWL Championships: 5th

NCAA Champs: 37th

Oklahoma Gold Classic: 3rd

Navy Classic: 2nd

2007-08

John Stutzman - Head Coach

8-7-1 Overall

BU vs. Pittsburgh L, 16-18
BU vs. Hofstra L, 12-30
BU vs. Michigan L, 12-27
BU vs. American University W, 36-9
BU vs. Appalachian State W, 23-17
BU vs. Buffalo T, 17-17
BU vs. Rider W, 26-10
BU vs. Binghamton W, 38-3
BU at Edinboro L, 9-25
BU at West Virginia L, 12-21
BU vs. Clarion W, 22-15
BU vs. Cleveland State W, 23-12
BU at Central Michigan L, 0-35
BU at Lock Haven W, 22-16
BU vs. East Stroudsburg W, 41-6
BU vs. Delaware State W, 52-0

EWL Championships: 4th

NCAA Championships: T-26th

2008-09

John Stutzman - Head Coach

9-7 Overall

BU at Pittsburgh L, 7-27
BU vs. Iowa L, 3-39
BU vs. Old Dominion L, 6-30
BU vs. UNC-Greensboro W, 35-6
BU vs. Sacred Heart W, 41-3
BU vs. E. Stroudsburg W, 33-12
BU vs. Buffalo L, 12-18

BU at Rider W, 26-10
BU at Binghamton W, 33-3
BU vs. Central Mich. L, 8-24
BU vs. West Virginia L, 16-19
BU at Clarion W, 22-12
BU at Cleveland St. W, 36-3
BU vs. Edinboro L, 12-25
BU vs. Lock Haven W, 29-9
BU vs. Rutgers W, 21-13

PSAC Championships: 2nd

Southern Scuffle: 12th

EWL Championships: 3rd

NCAA Championships: 37th

2009-10

John Stutzman - Head Coach

10-8 Overall

BU vs. Boston University W, 26-9
BU vs. Millersville W, 40--1
BU at Penn State L, 15-23
BU vs. Michigan W, 18-17
BU vs. Columbia W, 20-13
BU vs. Central Michigan L, 15-23
BU vs. Findlay W, 33-6
BU vs. Niagara CC W, 45-5
BU vs. Buffalo W, 21-16
BU vs. Sacred Heart W, 41-6
BU vs. Iowa State L, 7-38
BU vs. Northern Iowa L, 16-22
BU vs. Pittsburgh L, 12-23
BU at West Virginia L, 18-21
BU vs. Clarion L, 17-22
BU vs. Cleveland State W, 38-7
BU at Edinboro L, 13-28
BU at Lock Haven W, 22-15

Navy Classic: 4th

PSAC Championships: 2nd

Southern Scuffle: 8th

EWL Championships: 4th

NCAA Championships: 42nd

Bloomsburg University Wrestling

Pin Leaders Over The Years



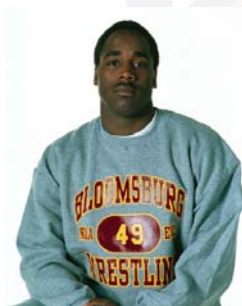
Shorty Hitchcock



Rick Bonomo



Dave Kennedy



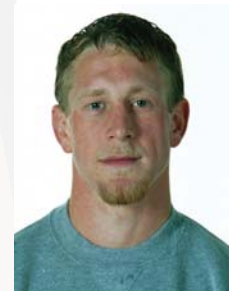
George Carter



Ricky Schmelyun



Mike Spaid



Ed Hockenberry

CAREER PIN LEADERS

<u>Name</u>	<u>Num.</u>	<u>Years</u>
Shorty Hitchcock	58	1969-74
Mike Spaid	45	2004-08
Rick Schmelyun	39	2006-10
Ed Hockenberry	35	1996-01
Rick Bonomo	32	1983-87
George Carter	26	1998-03
Matt Moley	26	2006-10
Dave Kennedy	20	1986-90

SINGLE SEASON PIN LEADERS

<u>Name</u>	<u>Num.</u>	<u>Year</u>
Shorty Hitchcock	24	1973-74
Ricky Bonomo	20	1983-84
Mike Spaid	17	2007-08
Ed Hockenberry	15	1999-00
Rick Schmelyun	15	2008-09
Mike Spaid	14	2006-07
Dan Klingerman	14	1983-84
Shorty Hitchcock	14	1970-71
Jason Grim	12	1997-98
Shorty Hitchcock	12	1971-72
Ed Hockenberry	11	2000-01
Mike Rudolph	10	1984-85
Darrin Evans	10	1985-86
Rick Schmelyun	10	2009-10

* If you have additional, verifiable information for this page please contact the sports information office

Bloomsburg University Wrestling

Coaching History / 100-Win Club

Coaching History

<u>Coach</u>	<u>Coaching Years</u>	<u>Yr.</u>	<u>W</u>	<u>L</u>	<u>T</u>	<u>Pct.</u>
Roger Sanders	1972-93	21	250	104	8	.702
Russ Houk	1957-72	15	143	34	4	.801
Tom Martucci	1993-2000	8	57	61	2	.483
John Stutzman	2005-present	5	50	40	1	.555
Dan Wirnsberger	2002-2005	3	26	22	0	.542
Walter Blair	1955-57	2	11	6	0	.647
Kenneth Karner	1936-39	3	5	7	0	.416
Jack Yohe	1954-55	1	1	6	0	.142
Dave Kennedy	2001-02	1	1	13	0	.071

The 100-Win Club

<u>Name</u>	<u>Years</u>	<u>W</u>	<u>L</u>	<u>T</u>	<u>Pct.</u>
Don Reese	1978-82	127	22	4	.843
Dave Morgan	1985-89	127	29	6	.802
Matt Moley	2006-10	125	39	0	.762
George Carter	1998-2003	122	24	0	.824
Ed Hockenberry	1996-01	121	24	0	.834
Mike Spaid	2004-08	117	49	0	.704
Rick Schmelyun	2006-10	117	57	0	.672
Ricky Bonomo	1983-87	116	12	3	.897
Mike Sees	2004-09	113	21	0	.843
Tony Caravella	1976-80	112	28	2	.795
Rocky Bonomo	1984-87	110	19	0	.853
Dave Kennedy	1986-90	109	28	4	.787
Andy Cappelli	1975-79	109	32	4	.765
Andy Fitzpatrick	1990-94	101	38	1	.725
Tony Reed	1986-90	100	35	5	.732

Bloomsburg University Wrestling

All-Americans



Floyd Hitchcock *
NCAA Champion
177 lbs. 1974



Ricky Bonomo*
NCAA Champion
118 lbs. 1985, 86, 87



Don Reese *
NCAA 2nd
134 lbs. 1982



Bob Hall *
NCAA 5th
167 lbs. 1963



Bill Robb
NCAA 4th
130 lbs. 1964



Richard Scorese
NCAA 6th
137 lbs. 1964



Ron Russo *
NCAA 6th, 4th
137 lbs. 1968,69



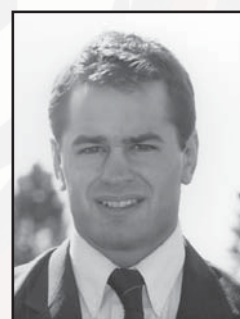
Randy Watts
NCAA 6th
150 lbs. 1975



Dom DiGiacchino
NCAA 5th
167 lbs. 1979



Tony Caravella*
NCAA 7th
150 lbs. 1980



Rocky Bonomo*
NCAA 8th, 4th
126 lbs. 1986,87



Dave Morgan *
NCAA 3rd, 6th
150 lbs. 1988, 89



Brad Rozanski
NCAA 8th
134 lbs. 1992



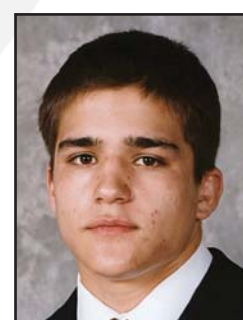
Chad Bailey
NCAA 7th
150 lbs. 1994



Pete Rinella
NCAA 8th
118 lbs. 1994



Mike Spaid
NCAA 8th
285 lbs. 2007



Matt Moley
NCAA 8th, 6th
157 lbs. 2008, 2009

*- Bloomsburg University Hall of Famers

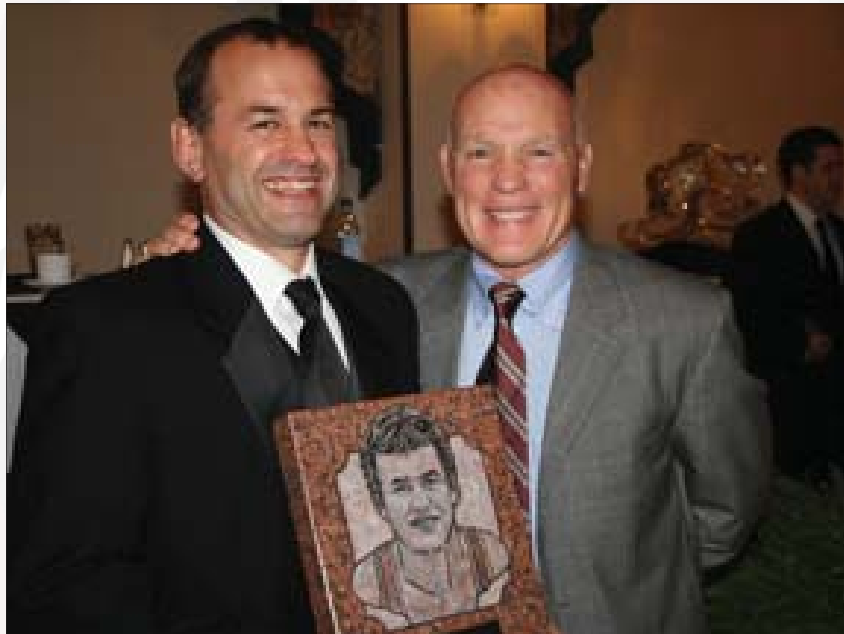
Bloomsburg University Wrestling

National Wrestling Hall of Fame

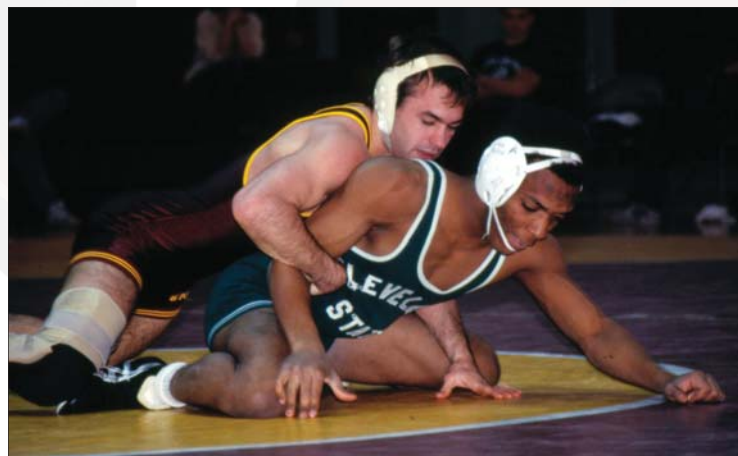
The National Wrestling Hall of Fame & Museum held its annual induction ceremony on May 31, 2008 with former Bloomsburg University great Ricky Bonomo '92 one of the four inductees for 2008.

Bonomo was the greatest wrestler in the history of Bloomsburg University. For three straight years 1985-87, Bonomo won all of the major events on the schedule, capturing the NCAA Div. I title, along with the Eastern Wrestling League EWL title and the Pennsylvania State Athletic Conference PSAC title at 118 pounds. He was named the EWL and PSAC Wrestler of the Year all three of those seasons. Ricky's career record was a stellar 116-12-3. Ricky and his brother Rocky were the first twins to win Pennsylvania state titles side-by-side in 36 years when they won Class AA titles for Lake Lehman High in 1981, wrestling for the legendary Floyd "Shorty" Hitchcock. Rocky was also an All-American for Bloomsburg, making the Bonomo brothers the most feared lightweight tandem in college wrestling at the time.

Joining Bonomo in the 2008 inductee class were Mike Houck of Victoria, Minn.; Wayne Martin of Tulsa, Okla. and Bobby Weaver of Easton, Pa.



Ricky Bonomo with former Huskies coach Roger Sanders



Ricky Bonomo in action as a member of the Huskies

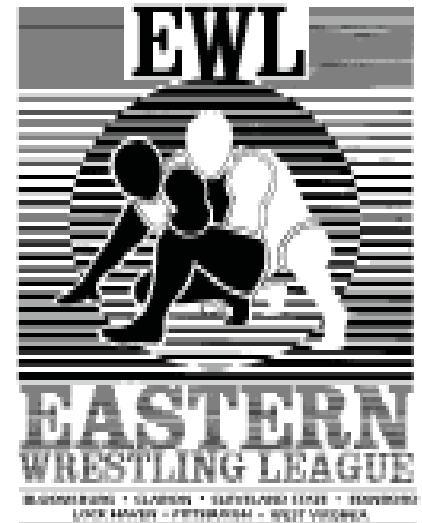
Bloomsburg University Wrestling

Eastern Wrestling League

Since the Eastern Wrestling League was formed in 1976, Bloomsburg has enjoyed much success, both as a team and individually. The Huskies won the team championship in 1981 and 1993 and have never placed lower than sixth. Individually, Bloomsburg wrestlers have compiled 34 titles.

In addition to Bloomsburg, the league includes Clarion, Cleveland State, Edinboro, Lock Haven, Pittsburgh and West Virginia.

Bloomsburg wrestlers hold three of the four fastest EWL tournament fall times. Heavyweight Mel Sharp holds the record with an 18-second pin in 1979, while Al McCollum, a 1982 title-winner, recorded a 36-second fall in 1981. In 1977, Leszek Radon pinned an opponent in 39 seconds.



BLOOMSBURG EWL AWARDS

FOUR TIME EWL CHAMPIONS

Don Reese, Bloomsburg 1979-82

THREE TIME EWL CHAMPIONS

Dom DiGioacchino, Bloomsburg 1978-80

Rocky Bonomo, Bloomsburg 1984, 85, 87

Ricky Bonomo, Bloomsburg 1985-87

WRESTLER OF THE YEAR

1982 Don Reese 134

1985 Ricky Bonomo 118

1986 Ricky Bonomo 118

1987 Ricky Bonomo 118

FRESHMAN OF THE YEAR

1987 Mark Banks 158

1993 Chad Bailey 150

2007 Matt Moley 149

COACH OF THE YEAR

2007 John Stutzman

EWL HALL OF FAME

WRESTLERS

Mark Banks

Ricky Bonomo

Rocky Bonomo

Tony Caravella

Dom DiGioacchino

Dave Morgan

Don Reese

Pete Rinella

Brad Rozanski,

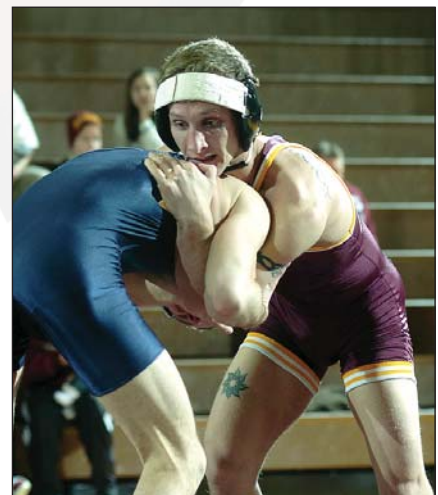
COACHES

Roger Sanders

BLOOMSBURG EWL FINISHES

1976	5th	1994	5th
1977	2nd	1995	6th
1978	3rd	1996	t-5th
1979	2nd	1997	6th
1980	2nd	1998	6th
1981	1st	1999	6th
1982	2nd	2000	4th
1983	5th	2001	6th
1984	4th	2002	8th
1985	3rd	2003	8th
1986	3rd	2004	5th
1987	3rd	2005	5th
1988	3rd	2006	4th
1989	5th	2007	5th
1990	3rd	2008	4th
1991	4th	2009	4th
1992	6th	2010	4th
1993	1st		

Mike Sees was a two-time EWL Champion

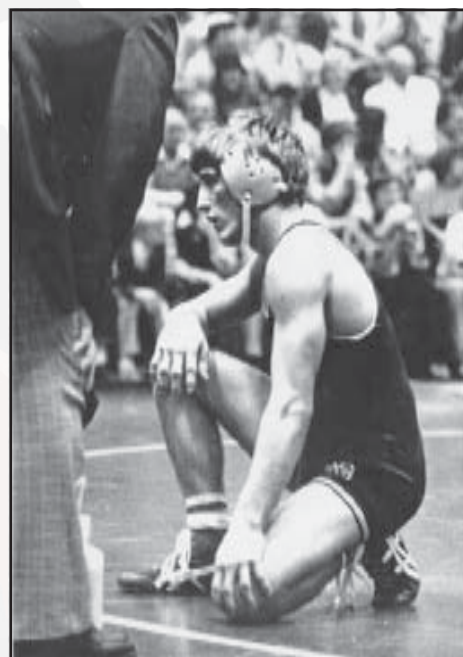


Bloomsburg University Wrestling

EWL Championship History

At the 32nd Eastern Wrestling League Championship tournament, Edinboro University won its ninth team title in the last 10 years, crowning three individual placemen.

In the long history of the EWL, only five wrestlers have won four EWL titles: Shawn Bunch of Edinboro 2002-03, 2005-06, Clarion's Kurt Angle 1988, 1990-1992, West Virginia's Greg Jones 2002-05, Vertus Jones 1997-2000 and Bloomsburg's Don Reese 1979-1982 are the only four-time winners in conference history.



2010 Final Team Standings

Place	Team	Points
1.	Edinboro	135.5
2.	Pittsburgh	125.5
3.	Clarion	111.0
4.	Bloomsburg	84.5
5.	West Virginia	78.0
6.	Lock Haven	58.0
7.	Cleveland State	37.0

All-Time EWL Champions

Year	Name	Weight	Year	Name	Weight
1977	Chris Poff	150	1990	Dave Kennedy	126
1978	Dom DiGiacchino	177	1991	Scott Brown	177
1979	Don Reese	126	1993	Brad Rozanski	126
	Dom DiGiacchino	167		Chad Bailey	150
1980	Don Reese	126	1994	Randy Reidler	126
	Tony Caravella	150		Chad Bailey	150
	Dom DiGiacchino	167		Tyrone Howard	190
1981	Todd Cummings	118	1995	Pete Rinella	118
	Ed Fiorvanti	126		Brad Rozanski	126
	Don Reese	134	1996	Brett Tullo	126
	Tom Fiorvanti	150	2000	George Carter	149
1982	Don Reese	134	2001	Ed Hockenberry	157
	Al McCollum	142	2003	George Carter	157
	Joe Wade	190	2005	Mike Sees	125
1984	Rocky Bonomo	126		Jim Bertulis	165
1985	Ricky Bonomo	118		Bryce Hasseman	174
	Rocky Bonomo	126	2006	Mike Spaid	285
	Darrin Evans	177	2007	Mike Spaid	285
1986	Ricky Bonomo	118	2008	Mike Sees	125
1987	Ricky Bonomo	118	2009	Mike Moley	157
1987	Rocky Bonomo	126	2010	Mike Moley	157
1988	Dave Morgan	150			
1989	Dave Morgan	150			

Bloomsburg University Wrestling

2010 EWL Championships

125 POUNDS

1. Anthony Zanetta.....Pittsburgh
2. Jay Young.....West Virginia
3. Eric Morrill.....Edinboro
4. Nick Hyatt.....Lock Haven
5. Joe Waltko.....Clarion
6. Ron Butler.....Cleveland St.

133 POUNDS

1. John Trumbetti Lock Haven
2. Jimmy Conroy..... Pittsburgh
3. Kyle Fluke Edinboro
4. Jason Guffey Bloomsburg
5. Jay Ivanco..... Clarion
6. Zech Huff..... Cleveland St.

141 POUNDS

1. Tyler Nauman Pittsburgh
2. Greg Lewis..... Clarion
3. Joel Webster Edinboro
4. Owen Wilkinson Lock Haven
5. Mike Mensini..... Cleveland St.
6. Ian De Sol Bloomsburg

149 POUNDS

1. Torsten Gillespie Edinboro
2. James Fleming..... Clarion
3. Eric Albright..... Pittsburgh
4. Mike Rowe..... West Virginia
5. Josh Roosa Bloomsburg
6. Dan Castillo..... Cleveland State

157 POUNDS

1. Matt Moley..... Bloomsburg
2. Hadley Harrison..... Clarion
3. John Greisheimer Edinboro
4. Kyle Eason West Virginia
5. Donnie Tasser Pittsburgh
6. Corey Carlo Cleveland St.

165 POUNDS

1. Jarrod King Edinboro
2. Donnie Jones..... West Virginia
3. Rick Schmelyun Bloomsburg
4. Nick Milano Clarion
5. Adam Counterman..... Pittsburgh
6. Rob Michaels Cleveland St.

174 POUNDS

1. Phil Marcone..... Edinboro
2. Nate Graham..... Bloomsburg
3. Matt Weston West Virginia
4. Steve Cressley Clarion
5. Dave Sullivan Pittsburgh
6. Derek Caldwell Lock Haven

184 POUNDS

1. Pat Bradshaw..... Edinboro
2. Zac Thomusseit Pittsburgh
3. Jeremie Cook..... Lock Haven
4. Clint Podish..... Clarion
5. Derek Coffey Bloomsburg
6. Dan Michaels Cleveland St.

197 POUNDS

1. Matt Wilps..... Pittsburgh
2. Alex Thomas Clarion
3. Shawn Fendon Edinboro
4. Kyle Rooney..... West Virginia
5. Brian Shaw..... Bloomsburg
6. Harry Turner..... Lock Haven

285 POUNDS

1. Ryan Tomei..... Pittsburgh
2. Brandon Williamson West Virginia
3. Chris Birchler..... Edinboro
4. Quintas McCorkle Clarion
5. Zac Walsh..... Bloomsburg
6. Chris Weber Cleveland St.

Bloomsburg University Wrestling

Pennsylvania State Athletic Conference

2009 Bloomsburg

Individual Placewinners

125-Jason Guffey	2nd
141-Frank Hickman	1st
149-Josh Roosa	2nd
157-Matt Moley	1st
165-Ricky Schmelyun	2nd
174-Nate Graham	1st
184-Derek Coffey	5th
197-Jacob Dabashinsky	3rd
285-Zac Walsh	4th

2010 CHAMPIONSHIPS



All-Time PSAC Champions

2009 Team Standings

1.	Edinboro	142.5
2.	Bloomsburg	134.5
3.	Clarion	110.0
4.	Lock Haven	99.5
5.	Gannon	62.0
6.	East Stroudsburg	49.5
7.	Kutztown	48.0
8.	Mercyhurst	47.5
9.	Millersville	43.5
10.	Shippensburg	40.0

Year	Name	Wt.	Year	Name	Wt.	Year	Name	Wt.
1957	Jim Garman	123	1970	Arnie Thompson	158	1988	Dave Kennedy	126
1958	Jim Garman	123	1971	Ron Sheehan	177		Mark Banks	158
1959	Jim Garman	123		Floyd Hitchcock	190	1989	Dave Kennedy	126
	Dick Rimple	137	1973	Floyd Hitchcock	190		Marty King	150
	Robert Rohm	157	1974	Randy Watts	134		Dave Morgan	158
	Gary Allen	HWT	1975	Randy Watts	150	1990	Dave Kennedy	126
1960	Tom Goranti	123	1976	Steve Scheib	177		Tony Reed	134
	Dale Sullivan	130	1977	Andy Cappelli	177		Scott Brown	177
	Wayne Rider	147	1978	Tony Caravella	150	1991	Tim Casey	126
	Gene Dixon	167		Andy Cappelli	167	1992	Tim Casey	126
	Robert Rohm	177	1979	Tony Caravella	150		Andy Fitzpatrick	150
1961	Gene Dixon	167		Bucky McCollum	158	1993	Andy Fitzpatrick	158
	William Garson	191		Andy Cappelli	177		Tyrone Howard	190
1962	Don Poust	177	1980	Mike Nock	118		Brian Keck	HWT
	Bob Hall	191		Tony Caravella	150	1994	Tyrone Howard	190
	William Garson	HWT		Bucky McCollum	158	1995	Pete Rinella	118
1963	Gerald Fortney	115		Dom DiGioacchino	167		Brad Rozanski	126
	Joel Melitski	123		Butch Snyder	177	1996	Brett Tullo	126
	Richard Scorese	147	1981	Ed Fiorvanti	126	1997	Brett Tullo	126
	Bill Paule	157	1982	Don Reese	134	2000	George Carter	149
	Bob Hall	191		Al McCollum	142		Ed Hockenberry	157
	William Garson	HWT		Tom Fiorvanti	150		Hunter Guenot	165
1964	Ed Taylor	137		Tom Gibble	167		Todd Hockenbroch	197
	Bill Paule	157		Joe Wade	190	2001	Ed Hockenberry	157
1965	Bill Robb	123	1983	Joe Wade	HWT	2003	George Carter	157
	James Rolley	130	1984	Ricky Bonomo	118		Hunter Guenot	174
	Tom Vargo	167		Rocky Bonomo	126	2004	Chad Hoare	197
1966	James Rolley	130		Tom Gibble	177	2005	Bryce Hasseman	174
	Barry Sutter	145	1985	Ricky Bonomo	118		Chad Hoare	197
	Tom Vargo	191		Rocky Bonomo	126	2006	Mike Sees	125
1967	Barry Sutter	145		Marty King	142		Brad Forbes	141
	Joe Gerst	152		Dan Klingerman	158	2007	Mike Spaid	285
1968	Ron Russo	137		Darrin Evans	177		Mike Sees	125
	Joe Gerst	152	1986	Ricky Bonomo	118		Darren Kern	141
1969	Ron Russo	137		Rocky Bonomo	126	2008	Mike Spaid	285
	Arnie Thompson	152		Ron Ippolite	HWT.		Mike Sees	125
	Jim McCue	HWT	1987	Dave Morgan	150	2009	Mike Spaid	285
							Nate Graham	174

Bloomsburg University Wrestling

All-Time Series Records

Name	W	L	T	Name	W	L	T
Akron	1	0	0	Manhattan	1	0	0
American	1	0	0	Mankato State	1	1	0
Arizona State	2	3	0	Mansfield	17	3	0
Army	4	4	0	Massachusetts	2	0	0
Appalachian State	8	1	1	Miami OH	2	1	0
Ashland	2	1	0	Michigan	2	1	0
Ball State	1	0	0	Millersville	38	7	0
Binghamton	1	0	0	Minnesota	0	5	0
Boston	1	0	0	Missouri	0	1	0
Brooklyn Poly. Instit.	1	1	0	Montana	1	0	0
Brigham Young	2	0	0	Montclair State	2	1	0
Brown	0	2	0	Morgan State	3	0	0
Bucknell	10	1	1	Navy	1	2	0
Buffalo	4	5	1	Nebraska	1	2	0
C. W. Post	2	0	0	Niagra CC	1	0	0
California PA	2	2	0	North Carolina State	4	0	1
Cal-Poly, SLO	0	2	0	Northern Illinois	0	1	0
Central OK	1	0	0	Northern Iowa	2	4	0
Central Michigan	0	3	0	Ohio	3	4	0
Citadel	1	0	0	Ohio State	0	2	0
Clarion	16	21	1	Oklahoma	1	2	0
Clemson	2	1	0	Old Dominion	3	0	0
Cleveland State	18	9	3	Oregon State	3	1	2
Columbia	1	0	0	Oswego	6	0	0
Cornell	1	4	0	Pennsylvania	0	3	0
Cortland State	2	0	0	Penn State	5	13	1
Delaware State	3	0	0	Purdue	2	1	0
Drake	1	0	0	Pittsburgh	17	16	0
Drexel	2	3	0	Princeton	3	0	0
Duquesne	1	3	0	Rider	5	6	0
East Stroudsburg	40	9	1	RIT	8	0	0
Eastern Michigan	1	1	0	Rutgers	5	3	0
Edinboro	7	15	0	Seton Hall	1	0	0
Franklin & Marshall	5	0	0	Shippensburg	33	2	0
Findlay	4	0	0	Slippery Rock	19	4	0
Gardner-Webb	1	0	0	S. Ill./Edwardsville	3	1	0
George Mason	2	1	0	Springfield	1	0	0
Georgia	1	0	0	Syracuse	1	1	0
Georgia State	1	0	0	Temple	2	0	0
Hampton Institute	1	0	0	Tennessee-Chattanooga	1	0	0
Hofstra	2	1	0	Trenton State	3	1	0
Indiana PA	23	5	0	Virginia	2	2	0
Indiana	1	2	0	Virginia Common.	1	0	0
Ithaca	1	0	0	Virginia Tech	3	3	0
Iowa	0	2	0	Wagner	2	0	0
Iowa State	0	8	0	Waynesburg	11	1	0
James Madison	1	0	0	West Chester	11	5	1
Kent State	1	0	0	West Virginia	13	16	1
Kutztown	14	0	0	Wilkes	4	1	0
Lehigh	1	1	1	William & Mary	1	0	0
Liberty	1	0	0	William Penn	1	0	0
Lincoln	10	0	0	Wisconsin State	1	0	0
Lock Haven	23	37	0	Wisconsin	3	0	0
Louisiana State	0	1	0	Wyoming	2	0	0

Bloomsburg University Wrestling

Nelson Field House

The Nelson Field House, located on Bloomsburg University's upper campus, serves as home for most of the university's indoor athletic events.

The facility, constructed in 1971, recently underwent a \$13.4 million dollar facelift. Among the renovations to the field house are a new bleacher system for the main gym area, a new scoreboard, a new wrestling room on the lower level of the



facility, a new and expanded press box, dedicated locker rooms for each sport, including an expanded football locker room, improved office space and additional storage space. In addition the pool area has been completely renovated with improved lighting, new bleachers, new starting blocks, improved timing system and record board.

The project also provided for enhancements to both the upper and lower entrances that will showcase the awards the teams have won over the last three decades. The project was completed in August of 2009.

Bloomsburg University Wrestling

2010-11 Wrestling Schedule

NOVEMBER

Sat.	6	at Boston University vs .Southern Maine vs. Bridgewater State	11:00 a.m. 1:00 p.m. 3:00 p.m.
Fri.	12	PENN STATE	7:00 p.m.
Sat.	20	at Navy Classic	9:00 a.m.
Sat.	27	at Northeast Duals # vs. George Mason vs. American vs. Northern Iowa	9:30 a.m. 2:30 p.m. 4:15 p.m.

DECEMBER

Sat.	4	PSAC Championships *	9:00 a.m.
Sun.	12	BLOOMSBURG DUALS w/Buffalo, Drexel, East Stroudsburg	11:00 a.m.
Thur.-Fri.	29-30	at Southern Scuffle	TBA

JANUARY

Tues.	4	NORTH CAROLINA STATE	1:00 p.m.
Wed.	5	at Sacred Heart	4:00 p.m.
Sun.	9	at Penn	1:00 p.m.
Sun.	16	at Pittsburgh	1:00 p.m.
Fri.	21	WEST VIRGINIA +	7:00 p.m.
Fri.	28	EDINBORO +	7:00 p.m.

FEBRUARY

Fri.	4	at Clarion +	7:00 p.m.
Sat.	5	at Cleveland State +	1:00 p.m.
Thur.	10	BINGHAMTON	7:00 p.m.
Fri.	18	LOCK HAVEN +	7:00 p.m.

MARCH

Sun.	6	EWL Championships *	TBA
Thur.-Sat.	17-19	at NCAA Championships \$	

*at Bloomsburg; + EWL Match; # at Albany, NY; \$ at Philadelphia, PA
Home Matches in **BOLD CAPS**